

# К

# SAVALVE

По вопросам продаж и поддержки обращайтесь:

Алматы (727)345-47-04  
Ангарск (3955)60-70-56  
Архангельск (8182)63-90-72  
Астрахань (8512)99-46-04  
Барнаул (3852)73-04-60  
Белгород (4722)40-23-64  
Благовещенск (4162)22-76-07  
Брянск (4832)59-03-52  
Владивосток (423)249-28-31  
Владикавказ (8672)28-90-48  
Владимир (4922)49-43-18  
Волгоград (844)278-03-48  
Волгодар (8172)26-41-59  
Воронеж (473)204-51-73  
Екатеринбург (343)384-55-89

Россия +7(495)268-04-70

Иваново (4932)77-34-06  
Ижевск (3412)26-03-58  
Иркутск (395)279-98-46  
Казань (843)206-01-48  
Калининград (4012)72-03-81  
Калуга (4842)92-23-67  
Кемерово (3842)65-04-62  
Киров (8332)68-02-04  
Коломна (4966)23-41-49  
Кострома (4942)77-07-48  
Краснодар (861)203-40-90  
Красноярск (391)204-63-61  
Курск (4712)77-13-04  
Курган (3522)50-96-47  
Липецк (4742)52-20-61

Казахстан +7(727)345-47-04

Магнитогорск (3519)55-03-13  
Москва (495)268-04-70  
Мурманск (8152)59-64-93  
Набережные Челны (8552)20-53-41  
Нижний Новгород (831)429-08-12  
Новокузнецк (3843)20-46-81  
Ноябрьск (3496)41-32-12  
Новосибирск (383)227-86-73  
Омск (3812)21-46-40  
Орел (4862)44-53-42  
Оренбург (3532)37-68-04  
Пенза (8412)22-31-16  
Петрозаводск (8142)55-98-37  
Псков (8112)59-10-37  
Пермь (342)205-81-47

Беларусь +(375)257-127-884

Ростов-на-Дону (863)308-18-15  
Рязань (4912)46-61-64  
Самара (846)206-03-16  
Санкт-Петербург (812)309-46-40  
Саратов (845)249-38-78  
Севастополь (8692)22-31-93  
Саранск (8342)22-96-24  
Симферополь (3652)67-13-56  
Смоленск (4812)29-41-54  
Сочи (862)225-72-31  
Ставрополь (8652)20-65-13  
Сургут (3462)77-98-35  
Сыктывкар (821)225-95-17  
Тамбов (4752)50-40-97  
Тверь (4822)63-31-35

Узбекистан +998(71)205-18-59

Тольятти (8482)63-91-07  
Томск (3822)98-41-53  
Тула (4872)33-79-87  
Тюмень (3452)66-21-18  
Ульяновск (8422)24-23-59  
Улан-Удэ (3012)59-97-51  
Уфа (347)229-48-12  
Хабаровск (4212)92-98-04  
Чебоксары (8352)28-53-07  
Челябинск (351)202-03-61  
Череповец (8202)49-02-64  
Чита (3022)38-34-83  
Якутск (4112)23-90-97  
Ярославль (4852)69-52-93

Киргизия +996(312)96-28-47

эл.почта: [vsj@nt-rt.ru](mailto:vsj@nt-rt.ru) || сайт: <https://savalve.nt-rt.ru/>

## Вентили для особо чистых и коррозионных газов SPECIAL TYPE, HIGHT PURITY, ELECTRONIC GAS CYLINDER VALVE



Type	WP (MPa)	DN (mm)	Medium	Safety device	Frame madality
HPF-2D	20	Φ4	High Purity Non-corrosive Gases and Rare Gases	NO	Пружинно-мембранный



Type	WP (MPa)	DN (mm)	Medium	Safety device	Frame madality
HPF-3D	20	Φ4	Ultra-high purity, flammable, explosive, highly toxic, corrosive electronic gases	NO	Мембранный



Type	WP (MPa)	DN (mm)	Medium	Safety device	Frame madality
HPF-3D1	20	Φ4	Ultra-high purity, flammable, explosive, highly toxic, corrosive electronic gases	YES	Мембранный



Type	WP (MPa)	DN (mm)	Medium	Safety device	Frame madality
HPF-1D	20	Φ4	Ultra-high purity, flammable, explosive, highly toxic, corrosive electronic gases	NO	Игольчатый

## Вентили для особо чистых и коррозионных газов SPECIAL TYPE, HIGHT PURITY, ELECTRONIC GAS CYLINDER VALVE

Type	WP (MPa)	DN (mm)	Medium	Frame madality
HPG-2A	24	1/4" - 1/2"	Ultra high purity, flammable, explosive, highly toxic, corrosive electronic gases	Мембранный



Type	WP (MPa)	DN (mm)	Medium	Frame madality
HPG-2li	24	1/4" - 1/2"	Ultra high purity, flammable, explosive, highly toxic, corrosive electronic gases	Мембранный



Type	WP (MPa)	DN (mm)	Medium	Outlet thread	Inlet thread	Safety device	Frame madality
PF10-1	15	Ø4	H <sub>2</sub> S	G1/2-14-LH-EXT	PZ27.8	NO	Сальниковый
PF10-1A	15	Ø4	H <sub>2</sub> S	G3/4-14-LH-EXT	PZ27.8	NO	Сальниковый
PF10-2	15	Ø4	PH <sub>3</sub>	W21.8-14-LH-EXT	PZ27.8	NO	Сальниковый



Type	WP (MPa)	DN (mm)	Medium	Outlet thread	Inlet thread	Safety device	Frame madality
QF-17	2	Ø6	C <sub>2</sub> H <sub>4</sub> O	G3/4-14-RH-EXT	PZ27.8	NO	Игольчатый



## Вентили для особо чистых и коррозионных газов SPECIAL TYPE, HIGH PURITY, ELECTRONIC GAS CYLINDER VALVE



Type	WP (MPa)	DN (mm)	Medium	Outlet thread	Inlet thread	Safety device	Frame madality
QF-21A	15	Ø2	High-purity gas	W21.8-14-RH-EXT	PZ19.2	NO	Пружинно-мембранный



Type	WP (MPa)	DN (mm)	Medium	Outlet thread	Inlet thread	Safety device	Frame madality
QF-90A	15	Ø4	High-purity gas	G5/8-14-RH-EXT	PZ27.8	NO	Мембранный
QF-90A1	15	Ø4	High-purity gas	W21.8-14-RH-EXT	PZ27.8	NO	Мембранный



Type	WP (MPa)	DN (mm)	Medium	Outlet thread	Inlet thread	Safety device	Frame madality
FF-1	16	Ø3.8	F <sub>2</sub>	1" -88SW	PZ27.8	NO	Изоляционный
FF-1A	16	Ø3.8	F <sub>2</sub>	G1/2	G3/4	NO	Изоляционный
FF-1B	16	Ø3.8	F <sub>2</sub>	1" -88SW	1" -88SW	NO	Изоляционный



Type	WP (MPa)	DN (mm)	Medium	Outlet thread	Inlet thread	Safety device	Frame madality
QF-2C9	15	Ø4	SF <sub>6</sub>	G5/8-14-RH-EXT	PZ27.8	NO	Сальниковый

## Вентили для особо чистых и коррозионных газов SPECIAL TYPE, HIGHT PURITY, ELECTRONIC GAS CYLINDER VALVE

Type	WP (MPa)	DN (mm)	Medium	Outlet thread	Inlet thread	Safety device	Frame madality
QF-2A3	15	φ4	N <sub>2</sub> O	11/16-20T.P.I.-RH-EXT	PZ27.8	22.5 $\frac{3}{16}$ MPa	Сальниковый



Type	WP (MPa)	DN (mm)	Medium	Outlet thread	Inlet thread	Safety device	Frame madality
QF-12A1	15	φ4	CO	G5/8-14-LH-INT	PZ27.8	22.5 $\frac{3}{16}$ MPa	Сальниковый
QF-12A2	20	φ4	CO	G5/8-14-LH-INT	PZ27.8	NO	Сальниковый



Type	WP (MPa)	DN (mm)	Medium	Outlet thread	Inlet thread	Safety device	Frame madality
QF-6C	15	φ8	N <sub>2</sub>	G5/8-14-RH-EXT	P39	22.5 $\frac{3}{16}$ MPa	Сальниковый



## Фитинги/переходники Super clean pipe fittings





**Криогенные клапана/вентили**  
**CRYOGENIC INSULATION CYLINDER CUT-OFF VALVE**

Type	WP (MPa)	DN (mm)	Medium	Outlet thread	Inlet thread	Handwheel/Color	Pipe length	Design temperature
DJ-10Y	3.5	Φ10	LNG, LO <sub>2</sub> , LN <sub>2</sub> , LAr	NPT3/8-INT	Φ18	Синий	54	-196°C - +85°C
DJ-10Y1	3.5	Φ10	LNG, LO <sub>2</sub> , LN <sub>2</sub> , LAr	NPT3/8-INT	Φ18	Зелёный	28.5	-196°C - +85°C
DJ-10Y2	3.5	Φ10	LNG, LO <sub>2</sub> , LN <sub>2</sub> , LAr	NPT3/8-INT	Φ18	Серый	54	-196°C - +85°C
DJ-10Y3	3.5	Φ10	LNG, LO <sub>2</sub> , LN <sub>2</sub> , LAr	NPT3/8-INT	Φ18	Зелёный	86	-196°C - +85°C
DJ-10Y4	3.5	Φ10	LNG, LO <sub>2</sub> , LN <sub>2</sub> , LAr	NPT3/8-INT	Φ18	Красный	28.5	-196°C - +85°C



Type	WP (MPa)	DN (mm)	Medium	Outlet thread	Inlet thread	Handwheel/Color	Design temperature
DJ-10S	3.5	Φ10	LNG, LO <sub>2</sub> , LN <sub>2</sub> , LAr	NPT3/8-INT	NPT3/8-INT	Зелёный	-196°C - +85°C



Type	WP (MPa)	DN (mm)	Medium	Outlet thread	Inlet thread	Handwheel/Color	Pipe length	Design temperature
DJ-10T	3.5	Φ10	LNG, LO <sub>2</sub> , LN <sub>2</sub> , LAr	Φ18	Φ18	Зелёный	28.5	-196°C - +85°C



Type	WP (MPa)	DN (mm)	Medium	Outlet thread	Inlet thread	Design temperature
DJ-25	3.5	Φ25	LNG, LO <sub>2</sub> , LN <sub>2</sub> , LAr	Φ32.5	Φ32.5	-196°C - +85°C



**Криогенный регулятор  
CRYOGENIC INSULATION CYLINDER COMBINED PRESSURE REGULATOR VALVE**



Type	DN (mm)	Medium	Pressure Range	Initial value	Outlet thread	Inlet thread	Design temperature
DYZ-6L	φ6	LNG, LO <sub>2</sub> , LN <sub>2</sub> , LAr	0.34 - 1.72	0.86	NPT1/4-INT	NPT1/4-INT	-196°C - +85°C
DYZ-6M	φ6	LNG, LO <sub>2</sub> , LN <sub>2</sub> , LAr	1.03 - 2.41	2.07	NPT1/4-INT	NPT1/4-INT	-196°C - +85°C
DYZ-6H	φ6	LNG, LO <sub>2</sub> , LN <sub>2</sub> , LAr	3.07 - 3.5	2.76	NPT1/4-INT	NPT1/4-INT	-196°C - +85°C

**Криогенный регулятор  
CRYOGENIC INSULATION CYLINDER PRESSURE RISING REGULATOR VALVE**



Type	DN (mm)	Medium	Pressure Range	Initial value	Outlet thread	Inlet thread	Design temperature
DYS-6L	φ6	LNG, LO <sub>2</sub> , LN <sub>2</sub> , LAr	0.34 - 1.72	0.86	NPT1/4-INT	NPT1/4-INT	-196°C - +85°C
DYS-6M	φ6	LNG, LO <sub>2</sub> , LN <sub>2</sub> , LAr	1.03 - 2.41	2.07	NPT1/4-INT	NPT1/4-INT	-196°C - +85°C
DYS-6H	φ6	LNG, LO <sub>2</sub> , LN <sub>2</sub> , LAr	3.07 - 3.5	2.76	NPT1/4-INT	NPT1/4-INT	-196°C - +85°C
DYS-6R1	φ6	LNG, LO <sub>2</sub> , LN <sub>2</sub> , LAr	0.34 - 1.72	1.10	NPT1/4-INT	NPT1/4-INT	-196°C - +85°C
DYS-10L	φ10	LNG, LO <sub>2</sub> , LN <sub>2</sub> , LAr	0.34 - 1.72	0.86	NPT1/2-INT	NPT1/2-INT	-196°C - +85°C

**Криогенный регулятор  
CRYOGENIC INSULATION CYLINDER PRESSURE REDUCING REGULATOR VALVE**



Type	DN (mm)	Medium	Pressure Range	Initial value	Direction	Outlet thread	Inlet thread	Design temperature
DYJ-6L	φ6	LNG, LO <sub>2</sub> , LN <sub>2</sub> , LAr	0.34 - 1.72	0.86	-	NPT1/4-INT	NPT1/4-INT	-196°C - +85°C
DYJ-6L1	φ6	LNG, LO <sub>2</sub> , LN <sub>2</sub> , LAr	0.34 - 1.72	0.86	-	NPT1/4-INT	NPT1/4-INT	-196°C - +85°C
DYJ-6R1	φ6	LNG, LO <sub>2</sub> , LN <sub>2</sub> , LAr	0.34 - 1.72	1.10	-	NPT1/4-INT	NPT1/4-INT	-196°C - +85°C

**Криогенный предохранительный клапан  
CRYOGENIC INSULATION CYLINDER SAFETY VALVE**



Type	DN (mm)	Medium	Pressure Range	Set pressure	Outlet thread	Inlet thread	Design temperature
DA-8L	φ8	LNG, LO <sub>2</sub> , LN <sub>2</sub> , LAr	1.50 - 1.90	1.59	M20 x 1.5-INT	NPT1/4-EXT	-196°C - +85°C
DA-8M	φ8	LNG, LO <sub>2</sub> , LN <sub>2</sub> , LAr	1.90 - 2.85	2.41	M20 x 1.5-INT	NPT1/4-EXT	-196°C - +85°C
DA-8H	φ8	LNG, LO <sub>2</sub> , LN <sub>2</sub> , LAr	2.85 - 3.5	3.35	M20 x 1.5-INT	NPT1/4-EXT	-196°C - +85°C
DA-8R1	φ8	LNG, LO <sub>2</sub> , LN <sub>2</sub> , LAr	1.90 - 2.85	1.90	0.75-20UNEF	NPT1/4-EXT	-196°C - +85°C
DA-8R2	φ8	LNG, LO <sub>2</sub> , LN <sub>2</sub> , LAr	1.90 - 2.85	2.41	0.75-20UNEF	NPT1/4-EXT	-196°C - +85°C
DA-8B1	φ8	LNG, LO <sub>2</sub> , LN <sub>2</sub> , LAr	1.50 - 1.90	1.59	M20 x 1.5-INT	NPT3/8-EXT	-196°C - +85°C
DA-8B2	φ8	LNG, LO <sub>2</sub> , LN <sub>2</sub> , LAr	1.90 - 2.85	2.41	M20 x 1.5-INT	NPT3/8-EXT	-196°C - +85°C

## Заправочный клапан

### CRYOGENIC GAS REFUELING RECEPTACLE

Type	WP (MPa)	DN (mm)	Medium	Outlet thread	Inlet thread	Design temperature
DJK-25A	1.6	φ25	LNG, LO <sub>2</sub> , LN <sub>2</sub> , LAr	NPT3/4-INT	φ39.5	-196°C ~ -85°C



## Клапан избыточного давления

### CRYOGENIC GAS REDUCING INTERFACE

Type	WP (MPa)	DN (mm)	Medium	Outlet thread	Inlet thread	Design temperature
DHK-10A	1.6	φ10	LNG, LO <sub>2</sub> , LN <sub>2</sub> , LAr	NPT3/4-INT	φ23.8	-196°C ~ -85°C



## Клапан переполнения

### CRYOGENIC OVERFLOW VALVE

Type	WP (MPa)	DN (mm)	Medium	Outlet thread	Inlet thread	Design temperature
DL-5	3.5	φ6	LNG, LO <sub>2</sub> , LN <sub>2</sub> , LAr	φ10	NPT3/8-EXT	-196°C ~ -85°C



Type	WP (MPa)	DN (mm)	Medium	Outlet thread	Inlet thread	Design temperature
DL-10D	3.5	φ10	LNG, LO <sub>2</sub> , LN <sub>2</sub> , LAr	M27 x2-EXT	NPT3/8-EXT	-196°C ~ -85°C



## Обратные клапана CRYOGENIC CHECK VALVE



Type	WP (MPa)	DN (mm)	Medium	Outlet thread	Inlet thread	Design temperature
DH-15A	3.5	Ø15	LNG, LO <sub>2</sub> , LN <sub>2</sub> , LAr	NPT1/2-INT	NPT1/2-INT	-196°C ~ +85°C
DH-15D	3.5	Ø15	LNG, LO <sub>2</sub> , LN <sub>2</sub> , LAr	NPT1/2-INT	M30 x 1.5-EXT	-196°C ~ +85°C
DH-15D1	3.5	Ø15	LNG, LO <sub>2</sub> , LN <sub>2</sub> , LAr	NPT1/2-INT	M36 x 2-EXT	-196°C ~ +85°C



Type	WP (MPa)	DN (mm)	Medium	Outlet thread	Inlet thread	Design temperature
DH-15B	3.5	Ø15	LNG, LO <sub>2</sub> , LN <sub>2</sub> , LAr	Ø22	M30 x 1.5-EXT	-196°C ~ +85°C



Type	WP (MPa)	DN (mm)	Medium	Outlet thread	Inlet thread	Design temperature
DH-15C	3.5	Ø15	LNG, LO <sub>2</sub> , LN <sub>2</sub> , LAr	Ø22	M36 x 2-EXT	-196°C ~ +85°C



Type	WP (MPa)	DN (mm)	Medium	Outlet thread	Inlet thread	Design temperature
DH-6A	3.5	Ø6	LNG, LO <sub>2</sub> , LN <sub>2</sub> , LAr	/	NPT1/8-EXT	-196°C ~ +85°C

**Маховик в сборе**

**SEVICE KITS FOR CRYOGENIC INSULATION CYLINDER CUT-OFF VALVE**



**Мембрана**

**SEVICE KITS FOR CRYOGENIC INSULATION CYLINDER COMBINED  
PRESSURE REGULATOR VALVE**



**Фиттинги/переходники**

**FITTINGS FOR CRYOGENIC VALVE**





## Вентили для метана (CNG)

### CNG CYLINDER VALVE

Type	WP (MPa)	DN (mm)	Medium	Outlet thread	Inlet thread	Safety device	Overflow device
QF-T1	20	05	CNG	NPT1/4-INT G1/2-14-RH-EXT	PZ27.8	30 <sup>2</sup> /Mpa 110°C ±5°C	NO
QF-T1A	20	05	CNG	M12x1-INT	PZ27.8	30 <sup>2</sup> /Mpa 110°C ±5°C	NO
QF-T1B	20	05	CNG	W21.8-14-LH-EXT	PZ27.8	30 <sup>2</sup> /Mpa 110°C ±5°C	NO
QF-T1D	20	05	CNG	NPT1/4-INT G1/2-14-RH-EXT	BS341 1"	30 <sup>2</sup> /Mpa 110°C ±5°C	NO
QF-T1F	20	05	CNG	M12x1-INT G1/2-14-RH-EXT	BS341 1"	30 <sup>2</sup> /Mpa 110°C ±5°C	NO
QF-T1K	20	05	CNG	NPT1/4-INT G1/2-14-RH-EXT	3/4-14NGT	30 <sup>2</sup> /Mpa 110°C ±5°C	NO
QF-T1K1	25	05	CNG	NPT1/4-INT G1/2-14-RH-EXT	3/4-14NGT	37.5 <sup>2</sup> /Mpa 110°C ±5°C	NO
QF-T1X	20	05	CNG	NPT1/4-INT G1/2-14-RH-EXT	PZ27.8	30 <sup>2</sup> /Mpa 110°C ±5°C	YES
QF-T1X1	20	05	CNG	NPT1/4-INT G1/2-14-RH-EXT	BS341 1"	30 <sup>2</sup> /Mpa 110°C ±5°C	YES
QF-T1L	20	05	CNG	M12x1-INT G1/2-14-RH-EXT	3/4-14NGT	30 <sup>2</sup> /Mpa 110°C ±5°C	YES



Type	WP (MPa)	DN (mm)	Medium	Outlet thread	Inlet thread	Safety device	Overflow device
QF-5T	20	05	CNG	W21.8-14-LH-EXT	PZ27.8	30 <sup>2</sup> /Mpa 110°C ±5°C	NO
QF-5T5	20	05	CNG	0.825-14NGO-LH-EXT	EN629-1 25E	30 <sup>2</sup> /Mpa 110°C ±5°C	NO
QF-5TK	20	04	CNG	W21.8-14-LH-EXT	PZ27.8	30 <sup>2</sup> /MPa	NO
QF-5TK1	20	04	CNG	NPT1/4-INT	PZ27.8	30 <sup>2</sup> /MPa	NO
QF-5TX	20	05	CNG	W21.8-14-LH-EXT	PZ27.8	30 <sup>2</sup> /MPa 110°C ±5°C	YES
QF-6T	25	05	CNG	W21.8-14-LH-EXT	PZ27.8	38 ±2MPa 110°C ±5°C	NO



Type	WP (MPa)	DN (mm)	Medium	Outlet thread	Inlet thread	Safety device	Overflow device
QF-5T7	20	07	CNG	W21.8-14-LH-EXT	PZ27.8	30 <sup>2</sup> /Mpa 110°C ±5°C	NO
QF-5T7A	20	07	CNG	W21.8-14-LH-EXT	M25x2-EXT	30 <sup>2</sup> /Mpa 110°C ±5°C	NO
QF-5T7C	20	07	CNG	G5/8-14-LH-EXT	PZ27.8	30 <sup>2</sup> /Mpa 110°C ±5°C	NO
QF-5T7X	20	07	CNG	NPT1/4-INT	PZ27.8	30 <sup>2</sup> /Mpa 110°C ±5°C	YES



## Баллонные вентили CNG CYLINDER VALVE



Type	WP (MPa)	DN (mm)	Medium	Outlet thread	Inlet thread	Safety device
CYT-3B	20	Ø6	CNG	NPT1/4-INT	PZ27.8	30 $\frac{3}{8}$ MPa 110°C ± 5°C
CYT-3B2	25	Ø6	CNG	NPT1/4-INT	1.125-12UNF	37.5 $\frac{3}{8}$ MPa 110°C ± 5°C
CYT-3C	20	Ø6	CNG	NPT1/4-INT	1.125-12UNF	30 $\frac{3}{8}$ MPa 110°C ± 5°C
CYT-3C1	25	Ø6	CNG	NPT1/4-INT	1.125-12UNF	37.5 $\frac{3}{8}$ MPa 110°C ± 5°C



Type	WP (MPa)	DN (mm)	Medium	Outlet thread	Inlet thread	Safety device
CYT-5	20	Ø5	CNG	M12x1-INT	W28.8x1/14	30 $\frac{3}{8}$ MPa 110°C ± 5°C
CYT-5 (C3D1)	20	Ø5	CNG	M12x1-INT	3/4-14NGT	30 $\frac{3}{8}$ MPa 110°C ± 5°C
CYT-5 (C5D1)	20	Ø5	CNG	M12x1-INT	1.125-12UNF	30 $\frac{3}{8}$ MPa 110°C ± 5°C
CYT-5 (C6D1)	20	Ø5	CNG	M12x1-INT	EN629-12E	30 $\frac{3}{8}$ MPa 110°C ± 5°C
CYT-5B	25	Ø5	CNG	M12x1-INT	W28.8x1/14	37.5 $\frac{3}{8}$ MPa 110°C ± 5°C



Type	WP (MPa)	DN (mm)	Medium	Outlet thread	Inlet thread	Safety device
CYT-6 (C2D1)	20	Ø4	CNG	M12x1-INT	W28.8x1/14	30 $\frac{3}{8}$ MPa 100°C ± 4°C
CYT-6 (C3D1)	20	Ø4	CNG	M12x1-INT	3/4-14NGT	30 $\frac{3}{8}$ MPa 100°C ± 4°C
CYT-6A (C2D1)	25	Ø4	CNG	M12x1-INT	W28.8x1/14	42.5 $\frac{3}{8}$ MPa 100°C ± 4°C
CYT-6A (C3D1)	25	Ø4	CNG	M12x1-INT	3/4-14NGT	42.5 $\frac{3}{8}$ MPa 100°C ± 4°C



Type	WP (MPa)	DN (mm)	Medium	Outlet thread	Inlet thread	Safety device
CYT-6B	20	Ø5	CNG	NPT1/4-INT	M25x2	30 $\frac{3}{8}$ MPa 100°C ± 4°C

**Балонные вентили с электромагнитным клапаном**  
**CNG CYLINDER VALVE ( ELECTROMOTION VALVE )**

Type	WP (MPa)	DN ( mm )	Medium	Outlet thread	Inlet thread	Safety device	Electromotion valve
CTF-XD1	20	φ6	CNG	M12×1-INT	1.125-12UNF	30 <sup>±</sup> MPa 110°C ±5°C	DC24V



Type	WP (MPa)	DN ( mm )	Medium	Outlet thread	Inlet thread	Safety device	Electromotion valve
CTF-XD2	20	φ6	CNG	M12×1-INT	W28.8×1/14	30 <sup>±</sup> MPa 110°C ±5°C	DC24V



**Магистральные клапана**  
**CNG CUT-OFF VALVE**

Type	WP (MPa)	Medium	DN ( mm )	Outlet thread	Inlet thread	modality
QF-T3	20	φ5	CNG	φ6	φ6	Двухсторонний
QF-T3J	20	φ5	CNG	φ8	φ8	Двухсторонний
QF-T3K	20	φ5	CNG	φ8	φ8	Трёхпук
QF-T3B	20	φ5	CNG	φ6	φ6	Трёхпук



Type	WP (MPa)	Medium	DN ( mm )	Outlet thread	Inlet thread	modality
QF-T3D1	20	φ5	CNG	NPT1/4-INT G1/2-14-RH-EXT	NPT1/4-INT G1/2-14-RH-EXT	Трёхпук



## Заправочные клапаны CNG FILLING VALVE



Type	WP (MPa)	DN (mm)	Medium	Outlet thread	Inlet thread
QF-T3H	20	Ø5	CNG	Ø6	Ø12
QF-T3H5	20	Ø5	CNG	Ø8	Ø12
QF-T3H6	20	Ø5	CNG	Ø6	Ø13



Type	WP (MPa)	DN (mm)	Medium	Outlet thread	Inlet thread
QF-T3H1	20	Ø5	CNG	Ø6	NGV



Type	WP (MPa)	DN (mm)	Medium	Outlet thread	Inlet thread
QF-T3H2	20	Ø5	CNG	Ø6	NGV



Type	WP (MPa)	DN (mm)	Medium	Outlet thread	Inlet thread
QF-T3H3	20	Ø5	CNG	Ø6	Ø18

## Заправочные клапана CNG FILLING VALVE

Type	WP (MPa)	DN (mm)	Medium	Outlet thread	Inlet thread
QF-T3H4	20	Ø5	CNG	M12x1-INT	Ø12



Type	WP (MPa)	DN (mm)	Medium	Outlet thread	Inlet thread
QF-T3A	20	Ø5	CNG	Ø6	Ø12



Type	WP (MPa)	DN (mm)	Medium	Outlet thread	Inlet thread
TCF-2	20	Ø5	CNG	M12x1-INT	NGVFL
TCF-2A	20	Ø5	CNG	M14x1-INT	NGVFL



Type	WP (MPa)	DN (mm)	Medium	Outlet thread	Inlet thread
TCF-2B	20	Ø5	CNG	Ø8	NGVFL
TCF-2B1	20	Ø5	CNG	M14x1.5-EXT	NGVFL
TCF-2B2	20	Ø5	CNG	NPT1/4-INT	NGVFL
TCF-4	20	Ø5	CNG	M14x1-INT	Ø12
TCF-5	20	Ø5	CNG	Ø8	Ø12
TCF-6	20	Ø5	CNG	Ø8	Ø12



## Заправочный клапан CNG FILLING VALVE



Type	WP (MPa)	DN (mm)	Medium	Outlet thread	Inlet thread	Safety device	Inflator size
QF-T1H	20	φ5	CNG	NPT1/4-INT G12-14-RH-EXT	PZ27.8	30 <sup>3</sup> MPa 110°C±5°C	φ12
QF-T1H2	20	φ5	CNG	NPT1/4-INT G12-14-RH-EXT	NPT1/4-INT G12-14-RH-EXT	NO	φ11
QF-T1H3	20	φ5	CNG	NPT1/4-INT G12-14-RH-EXT	NPT1/4-INT G12-14-RH-EXT	NO	φ12.7
QF-T1H5	20	φ5	CNG	NPT1/4-INT G12-14-RH-EXT	NPT1/4-INT G12-14-RH-EXT	NO	φ12
QF-T1H7	20	φ5	CNG	M12×1-INT G12-14-RH-EXT	M12×1-INT G12-14-RH-EXT	NO	φ12
QF-T1H8	20	φ5	CNG	M12×1-INT G12-14-RH-EXT	M12×1-INT G12-14-RH-EXT	NO	φ11
QF-T1H9	20	φ5	CNG	M12×1-INT G12-14-RH-EXT	M12×1-INT G12-14-RH-EXT	NO	φ12.7

## Предохранительные клапана CNG VALVE FITTINGS



Type	WP (MPa)	DN (mm)	Medium	Outlet thread	Safety device
PRD-1	20	φ5	CNG	PZ27.8	30 <sup>3</sup> MPa 110°C±5°C



Type	WP (MPa)	DN (mm)	Medium	Outlet thread	Safety device
PRD-2	20	φ5	CNG	PZ27.8	30 <sup>3</sup> MPa 110°C±5°C



Type	WP (MPa)	DN (mm)	Medium	Outlet thread	Safety device
GLQ-2	20	φ5	CNG	M12×1.25-INT	M12×1.25-INT

## Вентиль балонный для H<sub>2</sub> с электромагнитным клапаном HYDROGEN SOLENOID VALVE

Type	WP (MPa)	DN (mm)	Medium	Outlet thread	Inlet thread	Safety device	Voltage
DQF-1A	35	Ø5	H <sub>2</sub>	9/16-18UNF	2-12UN	110°C ±5°C	DC 24V



## Предохранительные клапана HYDROGEN VALVE PRD

Type	WP (MPa)	DN (mm)	Medium	Outlet thread	Inlet thread	Safety device
PRD-8H	35	Ø5	H <sub>2</sub>	9/16-18UNF	1.125-12UNF	110°C ±5°C
PRD-8H1	35	Ø5	H <sub>2</sub>	9/16-18UNF	M25 x 2	110°C ±5°C
PRD-8H2	35	Ø5	H <sub>2</sub>	9/16-18UNF	2-12UN	110°C ±5°C



Type	WP (MPa)	DN (mm)	Medium	Outlet thread	Inlet thread	Safety device
PRD-8B	35	Ø5	H <sub>2</sub>	9/16-18UNF	2-12UN	110°C ±5°C, 45 ± 2.25MPa
PRD-8D	35	Ø5	H <sub>2</sub>	9/16-18UNF	1.125-12UNF	110°C ±5°C, 52.5 $\frac{A}{B}$ MPa
PRD-8F	35	Ø5	H <sub>2</sub>	9/16-18UNF	M25 x 2	110°C ±5°C, 52.5 $\frac{A}{B}$ MPa





**Клапана для автономных систем пожаротушения (Co2/порошковые смеси)  
HFC-227ea CYLINDER VALVE**

Type	MAX WP (MPa)	DN (mm)	Outlet thread	Inlet thread	Siphon thread	Safety device
QRF25/5.3-1A	5.3	φ25	M36x2-EXT	PZ39	M30x1.5-INT	7.5±0.375MPa



Type	MAX WP (MPa)	DN (mm)	Outlet thread	Inlet thread	Siphon thread	Safety device
QRF25/4.2-1B1	4.2	φ25	M36x2-EXT	PZ39	M30x1.5-INT	5.9±0.295MPa



Type	MAX WP (MPa)	DN (mm)	Outlet thread	Inlet thread	Siphon thread	Safety device
QRF25/5.3-5A	5.3	φ25	M36x2-EXT	PZ39	M30x1.5-INT	7.5±0.375MPa



Type	MAX WP (MPa)	DN (mm)	Outlet thread	Inlet thread	Siphon thread	Safety device
QRF25/4.2-5B	4.2	φ25	M36x2-EXT	PZ39	M30x1.5-INT	5.9±0.295MPa



**Вентили баллонные**  
**HFC-227ea CYLINDER VALVE**



Type	MAX WP (MPa)	DN (mm)	Outlet thread	Inlet thread	Siphon thread	Safety device
QRF32/5.3-1A	5.3	ø32	M48x2-EXT	PZ56	M39x1.5-INT	7.5±0.375MPa
QRF32/5.3-1A2	5.3	ø32	M48x2-EXT	PZ56	Rc1¼-INT	7.5±0.375MPa
QRF32/8-1A	8	ø32	M48x2-EXT	PZ56	M39x1.5-INT	11±0.55MPa



Type	MAX WP (MPa)	DN (mm)	Outlet thread	Inlet thread	Siphon thread	Safety device
QRF32/4.2-5B	4.2	ø32	M48x2-EXT	PZ56	M39x1.5-INT	5.9±0.295MPa
QRF32/4.2-5B10	4.2	ø32	M48x2-EXT	PZ56	Rc1¼-INT	5.9±0.295MPa



Type	MAX WP (MPa)	DN (mm)	Outlet thread	Inlet thread	Siphon thread	Safety device
QRF32/5.3-18B	5.3	ø32	M48x2-EXT	PZ56	Rc1¼-INT	7.5±0.375MPa

## Вентили баллонные

### HFC-227ea CYLINDER VALVE

Type	MAX WP (MPa)	DN (mm)	Outlet thread	Inlet thread	Siphon thread	Safety device
QRF40/5.3-1A	5.3	φ40	M80 x 2-EXT	M72 x 2-EXT	M48 x 2-INT	7.5 ± 0.375MPa
QRF40/5.3-3A2	5.3	φ40	M56 x 2-EXT	M64 x 2-EXT	Rc1 ½-INT	7.5 ± 0.375MPa
QRF40/8-1A1	8	φ40	M80 x 2-EXT	M72 x 2-EXT	Rc1 ½-INT	11 ± 0.55MPa



Type	MAX WP (MPa)	DN (mm)	Outlet thread	Inlet thread	Siphon thread	Safety device
QRF40/4.2-5B	4.2	φ40	M60 x 2-EXT	M72 x 2-EXT	M48 x 2-INT	5.9 ± 0.295MPa



Type	MAX WP (MPa)	DN (mm)	Outlet thread	Inlet thread	Siphon thread	Safety device
QRF40/5.3-18B	5.3	φ40	M56 x 2-EXT	M64 x 2-EXT	Rc1 ½-INT	7.5 ± 0.375MPa



**Вентили баллонные  
HFC-227ea CYLINDER VALVE**



Type	MAX WP (MPa)	DN (mm)	Outlet thread	Inlet thread	Siphon thread	Safety device
QRF50/5.3-1A	5.3	φ50	M68×2-EXT	M80×2-EXT	M60×2-INT	7.5±0.375MPa
QRF50/5.3-1A3	5.3	φ50	M68×2-EXT	M80×2-EXT	Rc2-INT	7.5±0.375MPa
QRF50/8-1A	8	φ50	M68×2-EXT	M80×2-EXT	M60×2-INT	11±0.55MPa



Type	MAX WP (MPa)	DN (mm)	Outlet thread	Inlet thread	Siphon thread	Safety device
QRF50/4.2-1B1	4.2	φ50	M68×2-EXT	M80×2-EXT	M60×2-INT	5.9±0.295MPa
QRF50/4.2-1B3	4.2	φ50	M68×2-EXT	M80×2-EXT	Rc2-INT	5.9±0.295MPa



Type	MAX WP (MPa)	DN (mm)	Outlet thread	Inlet thread	Siphon thread	Safety device
QRF50/5.3-1B3	5.3	φ50	M68×2-EXT	M80×2-EXT	Rc2-INT	7.5±0.375MPa

## Вентили баллонные

### HFC-227ea CYLINDER VALVE

Type	MAX WP (MPa)	DN (mm)	Outlet thread	Inlet thread	Siphon thread	Safety device
QRF32/5.3-6A	5.3	Ø32	M48x2-EXT	PZ56	Rc1 $\frac{1}{4}$ -INT	7.5±0.375MPa



Type	MAX WP (MPa)	DN (mm)	Outlet thread	Inlet thread	Siphon thread	Safety device
QRF32/4.2-6B	4.2	Ø32	M48x2-EXT	PZ56	Rc1 $\frac{1}{4}$ -INT	5.9±0.295MPa



Type	MAX WP (MPa)	DN (mm)	Outlet thread	Inlet thread	Siphon thread	Safety device
FM200-1A	3.34	Ø25	1" BSPP	2.5-12UN-2A	Ø28.8	5.34±0.267 MPa
FM200-2A	3.34	Ø50	2" BSPP	3-12UN-2A	Ø57.4	5.34±0.267 MPa



## Вентили баллонные

### EXTERNAL STORAGE PRESSURE HFC-227ea CYLINDER VALVE



Type	MAX WP (MPa)	DN (mm)	Outlet thread	Inlet thread	Siphon thread	Safety device
QRF50/5.3-10A7	5.3	φ50	M68 x 2-EXT	M80 x 2-EXT	Rc2-INT	7.5 ± 0.375MPa



Type	MAX WP (MPa)	DN (mm)	Outlet thread	Inlet thread	Safety device
XF-1B10	15	φ16	M30 x 1.5-EXT	PZ39	19 ± 0.95MPa



Type	MAX WP (MPa)	DN (mm)	Outlet thread	Inlet thread	Action pressure (MPa)
ZDF1.6-1	5.3	φ6	M14 x 1.5-EXT	R3/4	1.5 ± 0.1MPa

## Вентили баллонные

### EXTERNAL STORAGE PRESSURE REGULATOR VALVE

Type	MAX WP (MPa)	DN (mm)	Outlet thread	Inlet thread	Outlet pressure
QJYF15/4.2-2	15	φ14	PZ56	M30 x 1.5-EXT	4.2-3.8MPa



Type	MAX WP (MPa)	DN (mm)	Outlet thread	Inlet thread	Outlet pressure
JYB12.5W-00D	5.3	φ12.5	Rc1 1/2	M30 x 1.5-EXT	4.2-3.8MPa



Type	MAX WP (MPa)	DN (mm)	Outlet thread	Inlet thread	Outlet pressure
JYB12.5W-00S	5.3	φ12.5	Rc1 1/2	M30 x 1.5-EXT	4.2-3.8MPa



## Клапаны баллонные HANGING HFC-227ea CYLINDER VALVE



Type	MAX WP (MPa)	DN (mm)	Outlet thread	Inlet thread	Siphon thread	Safety device
QRF16/2.5-7B	2.5	Φ16	M30 x 1.5-EXT	M30 x 1.5-EXT	Rc1/2-INT	85 ± 5°C, 3.4 ± 0.17MPa
QRF16/2.5-7B1	2.5	Φ16	M30 x 1.5-EXT	M30 x 1.5-EXT	Rc1/2-INT	3.4 ± 0.17MPa
QRF16/2.5-7B2	2.5	Φ16	M30 x 1.5-EXT	M30 x 1.5-EXT	Rc1/2-INT	85 ± 5°C



Type	MAX WP (MPa)	DN (mm)	Outlet thread	Inlet thread	Siphon thread	Safety device
QRF25/2.5-7B	2.5	Φ25	M36 x 2-EXT	PZ39	M30 x 1.5-INT	3.4 ± 0.17MPa
QRF25/4.2-7B	4.2	Φ25	M36 x 2-EXT	PZ39	M30 x 1.5-INT	5.9 ± 0.295MPa



Type	MAX WP (MPa)	DN (mm)	Outlet thread	Inlet thread	Siphon thread	Safety device
XQWRF20/2.5-2A	2.5	Φ20	Φ20	M30 x 1.5-EXT	/	68°C or 79°C



Type	MAX WP (MPa)	DN (mm)	Outlet thread	Inlet thread	Siphon thread	Safety device
XQCRF20/2.5	2.5	Φ20	Φ20	M30 x 1.5-EXT	/	3.4 ± 0.17MPa

## Дополнительное оборудование

### IG541 CYLINDER VALVE

Type	MAX WP (MPa)	DN (mm)	Outlet thread	Inlet thread	Safety device
XF-2D	17.2	Φ16	M30×1.5-EXT	1-11 1/2 NPT	23 ±1.15MPa
XF-2E	17.2	Φ16	M30×1.5-EXT	PZ39	23 ±1.15MPa



Type	MAX WP (MPa)	DN (mm)	Outlet thread	Inlet thread	Safety device
HRF14/17.2-5	17.2	Φ14	M27×1.5	1-11 1/2 NPT	23 ±1.15MPa



## Балонный вентиль для водорода

### NITROGEN CYLINDER VALVE

Type	MAX WP (MPa)	DN (mm)	Outlet thread	Inlet thread	Safety device
XF-1B	15	Ø8	G5/8-14-EXT	PZ27.8	21 ±1.05MPa



**Балонные вентили  
IG541 CYLINDER VALVE**



Type	MAX WP (MPa)	DN (mm)	Outlet thread	Inlet thread	Safety device
HRF12/35-1	35	Ø12	M30x1.5	PZ39	45±2.25MPa



Type	MAX WP (MPa)	DN (mm)	Outlet thread	Inlet thread	Safety device
HRF12/23.2-2	23.2	Ø12	M30x1.5	PZ39	31.5±1.575MPa

- Electric power: Use electrical actuator XDF-16
- Gas power: Use gas actuator XDF-18

**Электромагнитный клапан  
ELECTRICAL ACTUATOR**



Type	Voltage	Current	Install Thread
XDF-16	24VDC	1.2A	M27x1.5-EXT

## Ручной клапан GAS ACTUATOR

Type	MAX WP (MPa)	Dn (mm)	Install Thread	Gas Powered Thread
XDF-18	23.2	Φ6	M27×1.5-EXT	M14×1.5/Φ8



## Регулятор давления REGULATOR VALVE

Type	MAX WP (MPa)	DN (mm)	Outlet thread	Inlet thread	Output pressure
JYF23.2/6-1	23.2	Φ12	M30×1.5-EXT	M30×1.5-INT	4.2-3.8MPa



Type	MAX WP (MPa)	DN (mm)	Outlet thread	Inlet thread	Output pressure
JYF23.2/17.2-1	23.2	Φ12	M30×1.5-EXT	M30×1.5-INT	<17.2MPa



**Вентиль балонный (Co2)**  
**CARBON DIOXIDE CYLINDER VALVE**



Type	MAX WP (MPa)	DN (mm)	Outlet thread	Inlet thread	Siphon thread	Safety device
XF-1	15	Φ16	M30 x 1.5-EXT	1-11 <sup>1</sup> / <sub>2</sub> NPT	M20 x 1-INT	19±0.95MPa
XF-1D	15	Φ16	M30 x 1.5-EXT	PZ39	M20 x 1-INT	19±0.95MPa



Type	MAX WP (MPa)	DN (mm)	Outlet thread	Inlet thread	Siphon thread	Safety device
EP12/150	15	Φ12	M24 x 1.5-EXT	PZ27.8	M16 x 1-INT	19±0.95MPa
EP12/150B	15	Φ12	M24 x 1.5-EXT	1-11 <sup>1</sup> / <sub>2</sub> NPT	M16 x 1-INT	19±0.95MPa
EP12/150C	15	Φ12	M24 x 1.5-EXT	PZ39	M16 x 1-INT	19±0.95MPa



Type	MAX WP (MPa)	DN (mm)	Outlet thread	Inlet thread	Siphon thread	Safety device
ERF14/12.4-6A1	12.4	14	M27 x 1.5-EXT	PZ27.8	M16 x 1	19±0.95MPa

**Вентиль балонный (Co2) с электромагнитным клапаном**  
**ELECTROMOTION CYLINDER VALVE**

Type	MAX WP (MPa)	DN (mm)	Outlet thread	Inlet thread	Safety device
EPD6/8F	5.7	Ø6	Ø8	PZ27.8	8.8±0.44MPa
EPD6/8G	5.7	Ø6	Ø6	PZ27.8	8.8±0.44MPa
EPD6/8I	5.7	Ø6	Ø8	PZ19.2	8.8±0.44MPa



Type	MAX WP (MPa)	DN (mm)	Outlet thread	Inlet thread	Safety device
CRF6/6.7-2	5.7	Ø6	Ø6	PZ27.8	8.8±0.44MPa



Type	MAX WP (MPa)	DN (mm)	Outlet thread	Inlet thread	Safety device
DCF6-6C	5.7	Ø4	M14 x 1.5-INT	PZ27.8	8.8±0.44MPa



## Промышленные клапана (CO<sub>2</sub>) SELECTOR VALVE



Type	MAX WP ( MPa )	DN ( mm )	Outlet thread	Inlet thread	Opening pressure(MPa)	Frame modality
XZ32/17.2-1	17.2	32	Rc1 1/4-INT	Rc1 1/4-INT	≤1.5	Φ8
XZ40/17.2-1	17.2	40	Rc1 1/2-INT	Rc1 1/2-INT	≤1.5	Φ8
XZ50/17.2-1	17.2	50	Rc2-INT	Rc2-INT	≤1.5	Φ8



Type	MAX WP ( MPa )	DN ( mm )	Outlet thread	Inlet thread	Opening pressure(MPa)	Frame modality
XZ65/17.2-1	17.2	65	Rc2 1/2-INT	Rc2 1/2-INT	≤1.5	Φ8
XZ80/17.2-1	17.2	80	Rc3-INT	Rc3-INT	≤1.5	Φ8



Type	MAX WP ( MPa )	DN ( mm )	Outlet thread	Inlet thread	Opening pressure(MPa)	Frame modality
XZ100/17.2-1	17.2	100	Φ3/4BSPCT	Φ3/4BSPCT	≤1.5	Φ8
XZ125/17.2-1	17.2	125	Φ3/4BSPCT	Φ3/4BSPCT	≤1.5	Φ8
XZ150/17.2-1	17.2	150	Φ3/4BSPCT	Φ3/4BSPCT	≤1.5	Φ8

**Промышленные клапана (Co2)**  
**SELECTOR VALVE**

Type	MAX WP (MPa)	DN (mm)	Outlet thread	Inlet thread	Opening pressure(MPa)	Frame modality
XZ32/17.2-12B	17.2	32	Rc1 $\frac{1}{4}$ -INT	Rc1 $\frac{1}{4}$ -INT	≤1.5	Φ8
XZ40/17.2-12B	17.2	40	Rc1 $\frac{1}{2}$ -INT	Rc1 $\frac{1}{2}$ -INT	≤1.5	Φ8
XZ50/17.2-12B	17.2	50	Rc2-INT	Rc2-INT	≤1.5	Φ8



Type	MAX WP (MPa)	DN (mm)	Outlet thread	Inlet thread	Opening pressure(MPa)	Frame modality
XZ65/17.2-12B	17.2	65	Rc2 $\frac{1}{2}$ -INT	Rc2 $\frac{1}{2}$ -INT	≤1.5	Φ8
XZ80/17.2-12B	17.2	80	Rc3-INT	Rc3-INT	≤1.5	Φ8



Type	MAX WP (MPa)	DN (mm)	Outlet thread	Inlet thread	Opening pressure(MPa)	Frame modality
XZ100/17.2-12B	17.2	100	Φ3/4INCH	Φ3/4INCH	≤1.5	Φ8
XZ125/17.2-12B	17.2	125	Φ1INCH	Φ1INCH	≤1.5	Φ8
XZ150/17.2-12B	17.2	150	Φ1.125INCH	Φ1.125INCH	≤1.5	Φ8



**Балонный вентиль (с пусковым датчиком)**  
**FIRE DETECTING VALVE**



Type	MAX WP (MPa)	DN (mm)	Outlet thread	Inlet thread	Siphon thread	Fire detection tube	Safety device
HTF-1	15	Ø12	W21.8-14-RH-EXT	PZ27.8	M16x1-INT	Ø6	19±0.95MPa



Type	MAX WP (MPa)	DN (mm)	Outlet thread	Inlet thread	Siphon thread	Fire detection tube	Safety device
HTF-1G2	15	Ø12	W21.8-14-RH-EXT	PZ27.8	M16x1-INT	Ø8	19±0.95MPa



Type	MAX WP (MPa)	DN (mm)	Outlet thread	Inlet thread	Siphon thread	Fire detection tube	Safety device
HTF-2D	4.2	Ø12	W21.8-14-RH-EXT	PZ27.8	M16x1-INT	Ø6	5.9±0.295MPa

## Балонный вентиль (с пусковым датчиком)

### FIRE DETECTING VALVE

Type	MAX WP (MPa)	DN (mm)	Outlet thread	Inlet thread	Siphon thread	Fire detection tube	Safety device
HTF-2G2	4.2	Φ12	W21.8-14-RH-EXT	PZ27.8	M16x1-INT	Φ8	5.9±0.295MPa



Type	MAX WP (MPa)	DN (mm)	Outlet thread	Inlet thread	Siphon thread	Fire detection tube	Safety device
HTF-3	2.5	Φ6	Пусковой датчик	M30x1.5	Rc1/2	Φ6	3.4±0.17MPa



Type	MAX WP (MPa)	DN (mm)	Outlet thread	Inlet thread	Siphon thread	Fire detection tube	Safety device
HTF-5	2.5	Φ12	W21.8-14-RH-EXT	PZ27.8	M16x1-INT	Φ6	3.4±0.17MPa



**Реле давления  
PRESSURE SWITCH**



Type	MAX WP (MPa)	Action pressure (MPa)	Inlet thread
KY-1G	2	<0.5	M10x1-EXT

**Реле давления механические  
PRESSURE GAUGES SWITCH**



Type	MAX WP (MPa)	Switch thread	Fire detection tube
YBK-7	2	M10x1	Ø6



Type	MAX WP (MPa)	Switch thread	Fire detection tube
TB-0298	2	M10x1	Ø8



Type	MAX WP (MPa)	Switch thread	Fire detection tube
TB-0307	2	M10x1	Ø6

**Переходник (прямоточный)  
UNION STRAIGHT**



Type	MAX WP (MPa)	Fire detection tube
TB-0046	2	Ø6



Type	MAX WP (MPa)	Fire detection tube
TB-0297	2	Ø8

**Переходник (тройник)**  
**UNION TEE**

Type	MAX WP (MPa)	Fire detection tube
TB-0045	2	Ø6



Type	MAX WP (MPa)	Fire detection tube
TB-0296	2	Ø8



**Фитинги**  
**NOZZLE**

Type	MAX WP (MPa)	Fire detection tube
TB-0289	2	Ø6



Type	MAX WP (MPa)	Fire detection tube
TB-0305	2	Ø8



Type	MAX WP (MPa)	Inlet thread	Bore diameter
TJ-0172	2	M12 x 1.5-INT	4-Ø5



## Вентиль балонный (Co2) MARINE CARBON DIOXIDE CYLINDER VALVE



Type	WP (MPa)	DN (mm)	Outlet thread	Inlet thread	Siphon thread	Siphon thread	Safety device
CQ-2	14.7	φ12	M27 x 1.5-EXT	PZ27.8	M16x1-INT	M16x1.5-INT	18.6 ± 1MPa



Type	WP (MPa)	DN (mm)	Outlet thread	Inlet thread	Siphon thread	Siphon thread	Safety device
CQ-2E	14.7	φ12	M22 x 1.5-EXT	PZ27.8	M16x1-INT	M14x1.5-EXT	18.6 ± 1MPa
CQ-2L	14.7	φ12	M27 x 1.5-EXT	PZ27.8	M16x1-INT	M14x1.5-EXT	18.6 ± 1MPa



Type	WP (MPa)	DN (mm)	Outlet thread	Inlet thread	Siphon thread	Siphon thread	Safety device
CQ-2H	15	φ12	W21.8-14-RH-EXT	PZ27.8	M16x1-INT	G3/8-19-INT	18.6 ± 1MPa
CQ-2H6	15	φ12	W21.8-14-RH-EXT	PZ27.8	M16x1-INT	G3/8-19-INT	19 ± 0.95MPa

## Вентиль балонный (Co2) MARINE CARBON DIOXIDE CYLINDER VALVE

Type	WP   MPa	DN   mm	Outlet thread	Inlet thread	Siphon thread	Siphon thread	Safety device
CO-2T	15	Φ12	W21.8-14-RH-EXT	PZ27.8	M16x1-INT	G3/8-19-INT	19±0.95MPa



Type	WP   MPa	DN   mm	Outlet thread	Inlet thread	Siphon thread	Siphon thread	Safety device
CS-3	14.7	Φ12	M27x1.5-EXT	PZ27.8	M16x1-INT	/	18.6±1MPa



Type	WP   MPa	DN   mm	Outlet thread	Inlet thread	Pressure gauge thread	Siphon thread
NS-3	14.7	Φ6	M22x1.5-EXT	PZ27.8	M10x1-INT	/



## Вентиль балонный (Co2) MARINE CARBON DIOXIDE CYLINDER VALVE



Type	WP (MPa)	DN (mm)	Outlet thread	Inlet thread	Pressure gauge thread	Siphon thread
SF-1	12	φ6	M22×1.5-EXT	M22×1.5-EXT	/	M16×1.5-INT



Type	WP (MPa)	DN (mm)	Outlet thread	Inlet thread	Siphon thread	Safety device
QRF32-20A	5.3	φ32	M46×2-EX	PZ56	Rc1 1/4-INT	7.5±0.375MPa
QRF40-20A	5.3	φ40	M56×2-EXT	M64×2-EXT	Rc1 1/2-INT	7.5±0.375MPa
QRF50-20A	5.3	φ50	M68×2-EXT	M80×2-EXT	Rc2-INT	7.5±0.375MPa

## Вентиль балонный (Co2) с электромагнитным клапаном ELECTROMOTION CYLINDER VALVE



Type	WP (MPa)	DN (mm)	Outlet thread	Inlet thread	Siphon thread	Safety device
ERF14/14.7-6A	14.7	φ14	M27×1.5	P227.8	M16×1-INT	18.6±1MPa

## Клапан (Co2)

### MARINE SELECTOR VALVE

Type	WP (MPa)	DN (mm)	Outlet thread	Inlet thread	Opening pressure(MPa)	Frame madality
XZ25/14.7-1	14.7	25	RC1-INT	RC1-INT	≤1.5	Ø8
XZ32/14.7-1	14.7	32	RC1 1/4-INT	RC1 1/4-INT	≤1.5	Ø8



Type	WP (MPa)	DN (mm)	Outlet thread	Inlet thread	Opening pressure(MPa)	Frame madality
XZ40/14.7-1	14.7	40	Φ30x0.5	Φ30x0.5	≤1.5	Ø8
XZ50/14.7-1	14.7	50	Φ30x0.5	Φ30x0.5	≤1.5	Ø8
XZ65/14.7-1	14.7	65	Φ30x0.5	Φ30x0.5	≤1.5	Ø8
XZ80/14.7-1	14.7	80	Φ30x0.5	Φ30x0.5	≤1.5	Ø8



Type	WP (MPa)	DN (mm)	Outlet thread	Inlet thread	Opening pressure(MPa)	Frame madality
XZ100/14.7-2	14.7	100	Φ30x0.5	Φ30x0.5	≤1.5	Ø8
XZ125/14.7-2	14.7	125	Φ30x0.5	Φ30x0.5	≤1.5	Ø8
XZ150/14.7-2	14.7	150	Φ30x0.5	Φ30x0.5	≤1.5	Ø8



**Морской гудок**  
**MARINE WHISITLE**



Type	WP (MPa)	Action pressure(Mpa)	Inlet thread
XD-1	14.7	0.1	M27 x 1.5-EXT
XD-2	14.7	0.1	M22 x 1.5-EXT

**Трехходовой шаровый кран**  
**THREE WAY BALL VALVE**



Type	WP (MPa)	DN (mm)	Outlet thread	Inlet thread
595HF-86	14.7	Ø20	Rc1	Ø20

**Обратный клапан**  
**BACK PRESSURE VALVE**



Type	WP (MPa)	DN (mm)	Action pressure(Mpa)	Outlet thread	Inlet thread
595XD05-34	14.7	Ø6	0.3±0.05MPa	Ø14	Ø14
595XD05-34B	14.7	Ø3.2	2±0.1MPa	M22x1.5-EXT	M22x1.5-EXT

**Скоростной клапан**  
**ONE-WAY VALVE**



Type	MAX WP (MPa)	DN (mm)	Outlet thread	Inlet thread
595HF5-48-00A	17.2	Ø12	Ø39	M27 x 1.5-EXT
595HF5-48-00B	17.2	Ø12	Ø39	M22 x 1.5-EXT

**Скоростные клапана**  
**ONE-WAY VALVE**

Type	MAX WP (MPa)	DN (mm)	Outlet thread	Inlet thread
ED6/8	6.7	Ø6	Ø8	Ø8
ED6/8B	6.7	Ø4	Ø6	Ø6



Type	MAX WP (MPa)	DN (mm)	Outlet thread	Inlet thread
ED12/15	17.2	Ø12	R3/4-EXT	M24x1.5-EXT



Type	MAX WP (MPa)	DN (mm)	Outlet thread	Inlet thread
ED14/15A	17.2	Ø14	R3/4-EXT	M27x1.5-EXT
ED14/15B	17.2	Ø14	R3/4-EXT	M30x1.5-EXT



**Скоростные клапаны  
ONE-WAY VALVE**



Type	MAX WP (MPa)	DN (mm)	Outlet thread	Inlet thread
ED16/15A	17.2	Ø16	M30 x 1.5-EXT	M30 x 1.5-EXT



Type	MAX WP (MPa)	DN (mm)	Outlet thread	Inlet thread
ED32/15	17.2	Ø32	M48 x 2-INT	M48 x 2-EXT
ED40/15	17.2	Ø40	M60 x 2-INT	M60 x 2-EXT



Type	MAX WP (MPa)	DN (mm)	Outlet thread	Inlet thread
ED50/15	17.2	Ø50	M68 x 2-INT	M68 x 2-EXT

## Сигнализатор давления (с системой блокировки)

### SELFLOCKING PRESSURE ANNUNCIATOR

Type	MAX WP (MPa)	Voltage	Action pressure (Mpa)	Outlet thread
XF0.8/17.2-1	17.2	DC24V	0.8±0.08	R1/4-EXT
XF0.35/17.2-1	17.2	DC24V	0.35±0.035	R1/4-EXT



## Предохранительные клапана

### SAFETY VALVE

Type	DN (mm)	Inlet thread	Safety device
AX5.9-6	Φ6	R1/2-EXT	5.9±0.295MPa
AX7.5-6	Φ6	R1/2-EXT	7.5±0.375MPa
AX9-6	Φ6	R1/2-EXT	9±0.45MPa
AX11-6	Φ6	R1/2-EXT	11±0.55MPa
AX15-6	Φ6	R1/2-EXT	15±0.75MPa
AX19-6	Φ6	R1/2-EXT	19±0.95MPa
AX21-6	Φ6	R1/2-EXT	21±1.05MPa
AX23-6	Φ6	R1/2-EXT	23±1.15MPa



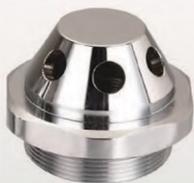
## Клапан уровня вентиляции

### LOW VENTING HIGH CLOSE VALVE

Type	MAX WP (MPa)	DN (mm)	Inlet thread	Action pressure (Mpa)
DG0.2/17.2-1	17.2	Φ8	M14x1.5-INT	0.2±0.05
DG0.3/6.6-1	6.6	Φ8	M14x1.5-INT	0.3±0.2
DG0.2/6.6-1	6.6	Φ1	M14x1.5-INT	0.2±0.1



## Насадки (распылители) NOZZLE



Type	MAX WP (MPa)	DN (mm)	Inlet thread
GPT32	8	φ32	M48 x 2-INT
GPT40	8	φ40	M56 x 2-INT
GPT40	8	φ40	M60 x 2-INT
GPT50	8	φ50	M66 x 2-INT



Type	MAX WP (MPa)	DN (mm)	Inlet thread
GPT32	8	φ32	M48 x 2-INT
GPT40	8	φ40	M56 x 2-INT
GPT40	8	φ40	M60 x 2-INT
GPT50	8	φ50	M66 x 2-INT



Type	MAX WP (MPa)	DN (mm)	Inlet thread
QPT25	8	φ25	Rc1-INT
QPT32	8	φ32	Rc1 1/4-INT
QPT40	8	φ40	Rc1 1/2-INT
QPT50	8	φ50	Rc2-INT

**Переходник (прямоточный)**  
**UNION STRAIGHT**

Type	MAX WP (MPa)	DN (mm)	Tube diameter	Link type
TZT-1	17.2	Ø6	Ø8	Ø8
TZT-2	17.2	Ø4	Ø6	Ø6



**Переходник (угловой)**  
**UNION ELBOW**

Type	MAX WP (MPa)	DN (mm)	Tube diameter	Link type
TWT-1	17.2	Ø6	Ø8	Ø8
TWT-2	17.2	Ø4	Ø6	Ø6



**Переходник (3х ходовой)**  
**UNION TEE**

Type	MAX WP (MPa)	DN (mm)	Tube diameter	Link type
TST-1	17.2	Ø6	Ø8	Ø8
TST-2	17.2	Ø4	Ø6	Ø6



**Переходник 4х ходовой**  
**UNION CROSS**

Type	MAX WP (MPa)	DN (mm)	Tube diameter	Link type
TCT-1	17.2	Ø6	Ø8	Ø8
TCT-2	17.2	Ø4	Ø6	Ø6





PH-110-6A

OPEN  
CLOSE

KHF-30A21

M18X1.5  
G3/8  
2017-01

SA

OPEN

SA

M18X1.5

## Вентили/клапаны баллонные

### CGA STANDARD SERIES CYLINDER VALVE

Type	WP   MPa	DN   mm	Medium	Outlet thread	Inlet thread	Safety device	Frame modality
CGA180	15	Φ3	CO <sub>2</sub>	0.625-18UNF-RH-EXT	0.75-16UNF	22.5 ±0.1 МПа	Медь/латунь



Type	WP   MPa	DN   mm	Medium	Outlet thread	Inlet thread	Safety device	Frame modality
CGA200	3	Φ3	C <sub>2</sub> H <sub>2</sub>	0.625-20NGO-RH-EXT	3/8-18NGT	100 ±5°C	Игольчатый



Type	WP   MPa	DN   mm	Medium	Outlet thread	Inlet thread	Safety device	Frame modality
CGA200-1	3	Φ3	C <sub>2</sub> H <sub>2</sub>	0.625-20NGO-RH-EXT	3/8-18NGT	100 ±5°C	Игольчатый



Type	WP   MPa	DN   mm	Medium	Outlet thread	Inlet thread	Safety device	Frame modality
CGA300-1	3	Φ4	C <sub>2</sub> H <sub>2</sub>	0.825-14NGO-RH-EXT	3/4-14NGT	NO	Сальниковый
CGA300-1A	3	Φ4	C <sub>2</sub> H <sub>2</sub>	0.825-14NGO-RH-EXT	3/4-14NGT	100 ±5°C	Сальниковый
CGA300-2	3	Φ4	C <sub>2</sub> H <sub>2</sub>	0.825-14NGO-RH-EXT	P227.8	NO	Сальниковый
CGA300-2A	3	Φ4	C <sub>2</sub> H <sub>2</sub>	0.825-14NGO-RH-EXT	P227.8	100 ±5°C	Сальниковый
CGA300-3	3	Φ4	C <sub>2</sub> H <sub>2</sub>	0.825-14NGO-RH-EXT	1-11 1/2NGT	NO	Сальниковый



## Вентили баллонные CGA STANDARD SERIES CYLINDER VALVE



Type	WP (MPa)	DN (mm)	Medium	Outlet thread	Inlet thread	Safety device	Frame modality
CGA320-2	15	Φ3	CO <sub>2</sub>	0.825-14NGO-RH-EXT	1-11'/NGT	22.5 <sub>1/2</sub> MPa	Сальниковый
CGA320-3	15	Φ3	CO <sub>2</sub>	0.825-14NGO-RH-EXT	3/4-14NGT	22.5 <sub>1/2</sub> MPa	Сальниковый
CGA320-6	1800psi	Φ3	CO <sub>2</sub>	0.825-14NGO-RH-EXT	3/4-14NGT	3000psi	Сальниковый



Type	WP (MPa)	DN (mm)	Medium	Outlet thread	Inlet thread	Safety device	Frame modality
CGA320-5	1800psi	Φ3	CO <sub>2</sub>	0.825-14NGO-RH-EXT	1.125-12UNF	3000psi	Сальниковый



Type	WP (MPa)	DN (mm)	Medium	Outlet thread	Inlet thread	Safety device	Frame modality
CGA326-1	15	Φ3	N <sub>2</sub> O	0.825-14NGO-RH-EXT	FZ27.8	22.5 <sub>1/2</sub> MPa	Сальниковый
CGA326-7	15	Φ3	N <sub>2</sub> O	0.825-14NGO-RH-EXT	3/4-14NGT	22.5 <sub>1/2</sub> MPa	Сальниковый
CGA326-4	1800psi	Φ3	N <sub>2</sub> O	0.825-14NGO-RH-EXT	1-11'/NGT	3000psi	Сальниковый



Type	WP (MPa)	DN (mm)	Medium	Outlet thread	Inlet thread	Safety device	Frame modality
CGA326-3	15	Φ3	N <sub>2</sub> O	0.825-14NGO-RH-EXT	0.75-16UNF	22.5 <sub>1/2</sub> MPa	Сальниковый
CGA326-5	1800psi	Φ3	N <sub>2</sub> O	0.825-14NGO-RH-EXT	1.125-12UNF	3000psi	Сальниковый

## Вентили баллонные

### CGA STANDARD SERIES CYLINDER VALVE

Type	WP (MPa)	DN (mm)	Medium	Outlet thread	Inlet thread	Safety device	Frame modality
CGA330-1	15	Ø4	NF <sub>4</sub>	0.825-14NGO-LH-EXT	3/4-14NGT	NO	Мембранный
CGA330-2	15	Ø4	NF <sub>4</sub>	0.825-14NGO-LH-EXT	PZ27.8	NO	Мембранный



Type	WP (MPa)	DN (mm)	Medium	Outlet thread	Inlet thread	Safety device	Frame modality
CGA346-1	15	Ø3	Air	0.825-14NGO-RH-EXT	PZ27.8	22.5 <sup>5</sup> / <sub>28</sub> MPa	Сальниковый
CGA346-2	15	Ø3	Air	0.825-14NGO-RH-EXT	1-11/16NGT	22.5 <sup>5</sup> / <sub>28</sub> MPa	Сальниковый
CGA346-3	15	Ø3	Air	0.825-14NGO-RH-EXT	3/4-14NGT	22.5 <sup>5</sup> / <sub>28</sub> MPa	Сальниковый



Type	WP (MPa)	DN (mm)	Medium	Outlet thread	Inlet thread	Safety device	Frame modality
CGA346-4	15	Ø3	Air	0.825-14NGO-RH-EXT	1.125-12UNF	22.5 <sup>5</sup> / <sub>28</sub> MPa	Сальниковый
CGA346-5	15	Ø3	Air	0.825-14NGO-RH-EXT	0.75-16UNF	22.5 <sup>5</sup> / <sub>28</sub> MPa	Сальниковый



Type	WP (MPa)	DN (mm)	Medium	Outlet thread	Inlet thread	Safety device	Frame modality
CGA350-1	15	Ø4	High-purity gas	0.825-14NGO-LH-EXT	PZ27.8	NO	Мембранный
CGA350-2	15	Ø4	High-purity gas	0.825-14NGO-LH-EXT	PZ19.2	NO	Мембранный



## Вентили баллонные CGA STANDARD SERIES CYLINDER VALVE



Type	WP (MPa)	DN (mm)	Medium	Outlet thread	Inlet thread	Safety device	Frame modality
CGA510-1	3.3	Φ3	C <sub>2</sub> H <sub>2</sub>	0.885-14NGO-LH-INT	3/4-14NGT	NO	Сальниковый
CGA510-2	3.3	Φ3	C <sub>2</sub> H <sub>2</sub>	0.885-14NGO-LH-INT	1/2-14NGT	NO	Сальниковый
CGA510-3	3.3	Φ3	C <sub>2</sub> H <sub>2</sub>	0.885-14NGO-LH-INT	1-11/16NGT	NO	Сальниковый
CGA510-5	3.3	Φ3	C <sub>2</sub> H <sub>2</sub>	0.885-14NGO-LH-INT	PZ27.8	NO	Сальниковый



Type	WP (MPa)	DN (mm)	Medium	Outlet thread	Inlet thread	Safety device	Frame modality
CGA520	3	Φ3	C <sub>2</sub> H <sub>2</sub>	0.895-18NGO-RH-EXT	3/8-18NGT	100±5°C	Изолируемый



Type	WP (MPa)	DN (mm)	Medium	Outlet thread	Inlet thread	Safety device	Frame modality
CGA540-1	15	Φ3	O <sub>2</sub>	0.903-14NGO-RH-EXT	3/4-14NGT	22.5 <sup>+0.25</sup> MPa	Сальниковый
CGA540-2	15	Φ3	O <sub>2</sub>	0.903-14NGO-RH-EXT	PZ27.8	22.5 <sup>+0.25</sup> MPa	Сальниковый
CGA540-6	15	Φ3	O <sub>2</sub>	0.903-14NGO-RH-EXT	1/2-14NGT	22.5 <sup>+0.25</sup> MPa	Сальниковый
CGA540-8B	15	Φ3	O <sub>2</sub>	0.903-14NGO-RH-EXT	1-11/16NGT	22.5 <sup>+0.25</sup> MPa	Сальниковый



Type	WP (MPa)	DN (mm)	Medium	Outlet thread	Inlet thread	Safety device	Frame modality
CGA540-3	15	Φ3	O <sub>2</sub>	0.903-14NGO-RH-EXT	1.125-12UNF	22.5 <sup>+0.25</sup> MPa	Сальниковый
CGA540-3A	15	Φ3	O <sub>2</sub>	0.903-14NGO-RH-EXT	0.75-16UNF	22.5 <sup>+0.25</sup> MPa	Сальниковый

## Вентили баллонные

### CGA STANDARD SERIES CYLINDER VALVE

Type	WP (MPa)	DN (mm)	Medium	Outlet thread	Inlet thread	Safety device	Frame modality
CGA540-8	2015psi	Ø3	O <sub>2</sub>	0.903-14NGO-RH-EXT	1-11 <sup>1</sup> / <sub>2</sub> NGT	3360psi	Сальниковый
CGA540-9	1800psi	Ø3	O <sub>2</sub>	0.903-14NGO-RH-EXT	1/2-14NGT	3000psi	Сальниковый
CGA540-12	2015psi	Ø3	O <sub>2</sub>	0.903-14NGO-RH-EXT	3/4-14NGT	3360psi	Сальниковый



Type	WP (MPa)	DN (mm)	Medium	Outlet thread	Inlet thread	Safety device	Frame modality
CGA540-14	2015psi	Ø3	O <sub>2</sub>	0.903-14NGO-RH-EXT	1.125-12UNF	3360psi	Сальниковый
CGA540-14A	1800psi	Ø3	O <sub>2</sub>	0.903-14NGO-RH-EXT	1.125-12UNF	3000psi	Сальниковый



Type	WP (MPa)	DN (mm)	Medium	Outlet thread	Inlet thread	Safety device	Frame modality
CGA580-2	15	Ø3	Inert gases	0.965-14NGO-RH-INT	3/4-14NGT	22.5 <sup>1</sup> / <sub>2,28</sub> MPa	Сальниковый
CGA580-3	15	Ø3	Inert gases	0.965-14NGO-RH-INT	PZ27.8	22.5 <sup>1</sup> / <sub>2,28</sub> MPa	Сальниковый



Type	WP (MPa)	DN (mm)	Medium	Outlet thread	Inlet thread	Safety device	Frame modality
CGA580-1	1800psi	Ø3	Inert gases	0.965-14NGO-RH-INT	1-11 <sup>1</sup> / <sub>2</sub> NGT	3000psi	Сальниковый
CGA580-1A	2015psi	Ø3	Inert gases	0.965-14NGO-RH-INT	1-11 <sup>1</sup> / <sub>2</sub> NGT	3360psi	Сальниковый
CGA580-5	1800psi	Ø3	Inert gases	0.965-14NGO-RH-INT	1/2-14NGT	3000psi	Сальниковый
CGA580-9	2015psi	Ø3	Inert gases	0.965-14NGO-RH-INT	3/4-14NGT	3360psi	Сальниковый



## Вентили баллонные CGA STANDARD SERIES CYLINDER VALVE



Type	WP (MPa)	DN (mm)	Medium	Outlet thread	Inlet thread	Safety device	Frame modality
CGA580-6	1800psi	Φ3	Inert gases	0.965-14NGO-RH-INT	1.125-12UNF	3000psi	Сальниковый
CGA580-6A	2015psi	Φ3	Inert gases	0.965-14NGO-RH-INT	1.125-12UNF	3360psi	Сальниковый



Type	WP (MPa)	DN (mm)	Medium	Outlet thread	Inlet thread	Safety device	Frame modality
CGA590-1	15	Φ3	SF <sub>6</sub>	0.965-14NGO-LH-INT	3/4-14NGT	NO	Сальниковый
CGA590-2	15	Φ3	SF <sub>6</sub>	0.965-14NGO-LH-INT	1-11/16NGT	22.5 MPa	Сальниковый



Type	WP (MPa)	DN (mm)	Medium	Outlet thread	Inlet thread	Safety device	Frame modality
CGA590-3	1800psi	Φ3	SF <sub>6</sub>	0.965-14NGO-LH-INT	1.125-12UNF	3000psi	Сальниковый
CGA590-3A	2015psi	Φ3	SF <sub>6</sub>	0.965-14NGO-LH-INT	1.125-12UNF	3360psi	Сальниковый



Type	WP (MPa)	DN (mm)	Medium	Outlet thread	Inlet thread	Safety device	Frame modality
CGA660	15	Φ8	N <sub>2</sub> O	1.03-14NGO-RH-EXT	1.125-12UNF	22.5 MPa	Сальниковый

## Клапаны баллонные (O<sub>2</sub>)

### CGA STANDARD SERIES CYLINDER VALVE

Type	WP (MPa)	DN (mm)	Medium	Outlet thread	Inlet thread	Safety device	Frame modality
CGA870-1	2015psi	φ 1.6	O <sub>2</sub>	Post type	3/4-16UNF	3360psi&165°F	Сбалансированный



Type	WP (MPa)	DN (mm)	Medium	Outlet thread	Inlet thread	Safety device	Frame modality
CGA870-2	2015psi	φ 1.6	O <sub>2</sub>	Post type	1/2-14NGT	3360psi&165°F	Сбалансированный
CGA870-3	2015psi	φ 1.6	O <sub>2</sub>	Post type	PZ27.8	3360psi&165°F	Сбалансированный



Type	WP (MPa)	DN (mm)	Medium	Outlet thread	Inlet thread	Safety device	Frame modality
CGA870A	2015psi	φ 1.6	O <sub>2</sub>	Post type	3/4-16UNF	3360psi&165°F	Сбалансированный



Type	WP (MPa)	DN (mm)	Medium	Outlet thread	Inlet thread	Safety device	Frame modality
CGA965-1	2015psi	φ 1.6	N <sub>2</sub> O & O <sub>2</sub>	Post type	PZ27.8	NO	Сбалансированный
CGA965-2	2015psi	φ 1.6	N <sub>2</sub> O & O <sub>2</sub>	Post type	PZ19.2	NO	Сбалансированный



**Вентили баллонные с клапаном RPV (клапан остаточного давления)  
RESIDUAL PRESSURE VALVE**



Type	WP (MPa)	DN (mm)	Medium	Outlet thread	Inlet thread	Safety device	Residual pressure	Frame modality
BYF-2	15	Ø4	O <sub>2</sub> , Ar, N <sub>2</sub> , He	G5/8-14-RH-EXT	PZ27.8	22.5 <sup>±0.03</sup> MPa	0.15 - 0.35MPa	Сальниковый
BYF-2C	20	Ø6	O <sub>2</sub> , Ar, N <sub>2</sub> , He	W24 x 2 RH	EN629-1 25E	30 <sup>±0.1</sup> MPa	0.15 - 0.5MPa	Сальниковый
BYF-2C3	15	Ø6	O <sub>2</sub> , Ar, N <sub>2</sub> , He	G5/8-14-RH-EXT	PZ27.8	22.5 <sup>±0.03</sup> MPa	0.15 - 0.5MPa	Сальниковый



Type	WP (MPa)	DN (mm)	Medium	Outlet thread	Inlet thread	Safety device	Residual pressure	Frame modality
BYF-2B9	15	Ø4	O <sub>2</sub> , Ar, N <sub>2</sub> , He	G5/8-14-RH-EXT	PZ27.8	NO	0.15 - 0.5MPa	Сальниковый



Type	WP (MPa)	DN (mm)	Medium	Outlet thread	Inlet thread	Safety device	Residual pressure	Frame modality
BYF-2C1	15	Ø6	O <sub>2</sub> , Ar, N <sub>2</sub> , He	G5/8-14-RH-EXT	PZ27.8	NO	0.15 - 0.5MPa	Сальниковый
BYF-2C5	20	Ø6	O <sub>2</sub> , Ar, N <sub>2</sub> , He	G5/8-14-RH-EXT	PZ27.8	NO	0.15 - 0.5MPa	Сальниковый

## Вентили баллонные с клапаном RPV (клапан остаточного давления)

### RESIDUAL PRESSURE VALVE

Type	WP (MPa)	DN (mm)	Medium	Outlet thread	Inlet thread	Safety device	Residual pressure	Frame modality
BYF-4B10	15	Φ4	O <sub>2</sub> , Ar, N <sub>2</sub> , He	BS341 NO.3	EN629-1 25E	NO	0.15 - 0.35MPa	Сальниковый
BYF-4B11	15	Φ4	O <sub>2</sub> , Ar, N <sub>2</sub> , He	BS341 NO.4	EN629-1 25E	NO	0.15 - 0.35MPa	Сальниковый
BYF-4B16	20	Φ4	O <sub>2</sub> , Ar, N <sub>2</sub> , He	BS341 NO.3	BS341 1"	NO	0.15 - 0.5MPa	Сальниковый
BYF-4B21	20	Φ4	O <sub>2</sub> , Ar, N <sub>2</sub> , He	BS341 NO.4	PZ27.8	NO	0.15 - 0.35MPa	Сальниковый
BYF-4B23	20	Φ4	O <sub>2</sub> , Ar, N <sub>2</sub> , He	BS341 NO.3	PZ27.8	NO	0.15 - 0.35MPa	Сальниковый



Type	WP (MPa)	DN (mm)	Medium	Outlet thread	Inlet thread	Safety device	Residual pressure	Frame modality
BYF-4B24	20	Φ4	O <sub>2</sub> , Ar, N <sub>2</sub> , He	0.965-14NGO-RH-INT	3/4-14NGT	30 $\frac{0}{0.25}$ MPa	0.15 - 0.35MPa	Сальниковый



Type	WP (MPa)	DN (mm)	Medium	Outlet thread	Inlet thread	Safety device	Residual pressure	Frame modality
PX-35A	15	Φ4	Ar	G5/8-14-RH-INT	PZ27.8	22.5 $\frac{0}{0.25}$ MPa	0.15 - 0.35MPa	Сальниковый
PX-35B	20	Φ4	Ar	AS2473.2 T20	EN629-1 25E	30 $\frac{0}{0.25}$ MPa	0.15 - 0.35MPa	Сальниковый
PX-35C	15	Φ4	Ar	0.965-14NGO-RH-INT	PZ27.8	22.5 $\frac{0}{0.25}$ MPa	0.15 - 0.35MPa	Сальниковый



## Вентили баллонные CV SERIES CYLINDER VALVE



Type	WP (MPa)	DN (mm)	Medium	Outlet thread	Inlet thread	Safety device	Frame modality
CVAQ-1101	15	φ4	O <sub>2</sub>	BS341 NO.3	BS341 1'	22.5 <sup>±0.03</sup> MPa	Сальниковый
CVAT-1108	20	φ4	O <sub>2</sub>	BS341 NO.3	EN629-1 25E	30 <sup>±0.05</sup> MPa	Сальниковый
CVAD-1207	3	φ4	C <sub>2</sub> H <sub>2</sub>	G5/8-14-LH-INT	BS341 1'	100C ± 5C	Сальниковый



Type	WP (MPa)	DN (mm)	Medium	Outlet thread	Inlet thread	Safety device	Frame modality
CVAT-1116	20	φ4	O <sub>2</sub>	0.903-14NGO-RH-EXT	3/4-14NGT	30 <sup>±0.05</sup> MPa	Сальниковый
CVAT-1120	20.7	φ4	O <sub>2</sub>	G5/8-14-RH-INT	PZ27.8	31 - 34.5 MPa	Сальниковый
CVAT-2202	20	φ4	CNG	0.825-14NGO-LH-EXT	BS341 1'	30 <sup>±0.05</sup> MPa 110C ± 5C	Сальниковый
CVAT-3606	20	φ4	O <sub>2</sub> , AR, HE, N <sub>2</sub>	G5/8-14-RH-INT	1.125-12UNF-2A	30 <sup>±0.05</sup> MPa	Сальниковый
CVAQ-3002	15	φ4	N <sub>2</sub> O	G3/8	W28.8 x 1/14	19 ± 0.95 MPa	Сальниковый
CVAQ-3003	15	φ4	N <sub>2</sub> O	BS341 NO.13	EN629-1 25E	22.5 <sup>±0.03</sup> MPa	Сальниковый



Type	WP (MPa)	DN (mm)	Medium	Outlet thread	Inlet thread	Safety device	Frame modality
CVAT-1101	20	φ4	O <sub>2</sub>	G5/8-14-RH-INT	BS341 1'	NO	Сальниковый
CVAT-1105	20	φ4	O <sub>2</sub>	G5/8-14-RH-INT	PZ27.8	NO	Сальниковый
CVAT-1111	20	φ4	O <sub>2</sub> , AR, HE, N <sub>2</sub>	G5/8-14-RH-INT	EN629-1 25E	NO	Сальниковый
CVAT-1304	20	φ4	AR	0.965-14NGO-RH-INT	PZ27.8	NO	Сальниковый
CVAT-1904	20	φ4	H <sub>2</sub>	G5/8-14-LH-INT	PZ27.8	NO	Сальниковый
CVAT-2501	20	φ4	HE	G5/8-14-RH-INT	PZ27.8	NO	Сальниковый
CVAT-3601	20	φ4	O <sub>2</sub> , AR, HE, N <sub>2</sub>	W21.8 x 1/14-RH	PZ27.8	NO	Сальниковый
CCAD-1201	3	φ4	C <sub>2</sub> H <sub>2</sub>	G5/8-14-LH-INT	PZ27.8	NO	Сальниковый



Type	WP (MPa)	DN (mm)	Medium	Outlet thread	Inlet thread	Safety device	Frame modality
CVAT-1115	20	φ4	O <sub>2</sub> , AR, HE, N <sub>2</sub>	G5/8-14-RH-INT	PZ27.8	NO	Сальниковый
CVAT-1302	20	φ4	AR	G5/8-14-RH-INT	PZ27.8	NO	Сальниковый
CVAT-1901	20	φ4	H <sub>2</sub>	W21.8-14-LH-EXT	PZ27.8	NO	Сальниковый
CVAT-3611	20	φ4	O <sub>2</sub> , AR, HE, N <sub>2</sub> , SF <sub>6</sub>	G5/8-14-RH-INT	PZ27.8	NO	Сальниковый
CVAT-3618	20	φ4	O <sub>2</sub> , AR, N <sub>2</sub>	W21.8-14-RH-EXT	EN629-1 25E	NO	Сальниковый
CVAQ-3001	15	φ4	N <sub>2</sub> O	W22-14-RH-EXT	JISB8246 V2	NO	Сальниковый

## Вентили баллонные

### CV SERIES CYLINDER VALVE

Type	WP (MPa)	DN (mm)	Medium	Outlet thread	Inlet thread	Safety device	Frame material
CVBQ-1102	15	Ø4	O <sub>2</sub>	BS341 NO.3	BS341 1"	22.5 <sup>0</sup> <sub>-0.25</sub> MPa 110°C ±5°C	Сплав никобал
CVBQ-1103	15	Ø4	O <sub>2</sub>	G5/8-14-RH-INT	PZ27.8	22.5 <sup>0</sup> <sub>-0.25</sub> MPa	Сплав никобал



Type	WP (MPa)	DN (mm)	Medium	Outlet thread	Inlet thread	Safety device	Frame material
CVBT-3602	20	Ø4	O <sub>2</sub> , AR, HE, N <sub>2</sub>	G5/8-14-RH-INT	PZ27.8	30 <sup>0</sup> <sub>-3</sub> MPa	Сплав никобал



Type	WP (MPa)	DN (mm)	Medium	Outlet thread	Inlet thread	Safety device	Frame material
CVBT-1101	20	Ø4	O <sub>2</sub>	G5/8-14-RH-INT	BS341 1"	NO	Сплав никобал
CVBT-1102	20	Ø4	O <sub>2</sub>	G5/8-14-RH-INT	PZ27.8	NO	Сплав никобал
CVBT-1103	20	Ø4	O <sub>2</sub>	G5/8-14-RH-INT	BS341 1"	NO	Сплав никобал
CVBT-3601	20	Ø4	O <sub>2</sub> , AR, HE, N <sub>2</sub> , etc.	G5/8-14-RH-INT	EN629-1.25E	NO	Сплав никобал
CVBD-2001	3	Ø4	C <sub>2</sub> H <sub>2</sub>	G5/8-14-LH-INT	Pz39	NO	Сплав никобал



Type	WP (MPa)	DN (mm)	Medium	Outlet thread	Inlet thread	Safety device	Frame material
CVBQ-1101	15	Ø4	O <sub>2</sub>	G5/8-14-RH-INT	PZ27.8	NO	Сплав никобал



## Вентили баллонные (для воздуха) AIR BREATHING APPARATUS VALVE



Type	WP (MPa)	DN (mm)	Medium	Outlet thread	Inlet thread	Safety device
KHF-30A11	30	Ø3	Air	G5/8-14-RH-INT	M18x1.5	45.1, MPa
KHF-30A12	30	Ø3	Air	M22x1.5-INT	M18x1.5	45.1, MPa
KHF-30A21	30	Ø3	Air	G5/8-14-RH-INT	M18x1.5	45.1, MPa



Type	WP (MPa)	DN (mm)	Medium	Outlet thread	Inlet thread	Safety device
KHF-30A31	30	Ø3	Air	G5/8-14-RH-INT	M18x1.5	45.1, MPa



Type	WP (MPa)	DN (mm)	Medium	Outlet thread	Inlet thread	Safety device
QSF-1	20	Ø3	Air	Ø18Clamp	M16x1.5	28±2MPa
QSF-1A	20	Ø3	Air	Ø18Clamp	PZ19.2	28±2MPa
QSF-1A1	15	Ø3	Air	Ø18Clamp	PZ19.2	22.5 <sup>0</sup> / <sub>±0.3</sub> MPa
QSF-1B	20	Ø3	Air	Ø18Clamp	M16x1.5	28±2MPa



Type	WP (MPa)	DN (mm)	Medium	Outlet thread	Inlet thread	Safety device
QSF-2	20	Ø3	Air	Ø18Clamp	G3/4	28±2MPa
QSF-2A	20	Ø3	Air	Ø18Clamp	M18x1.5	28±2MPa
QSF-2B	20	Ø3	Air	Ø18Clamp	PZ27.8	28±2MPa
QSF-2C	20	Ø3	Air	Ø18Clamp	PZ19.2	28±2MPa

## Вентили баллонные OXYGEN CYLINDER VALVE

Type	WP (MPa)	DN (mm)	Medium	Outlet thread	Inlet thread	Safety device	Frame material
QF-2	15	Φ4	O <sub>2</sub> , N <sub>2</sub> , Air	G5/8-14-RH-EXT	PZ27.8	22.5 <sup>+0</sup> <sub>-2.35</sub> MPa	Сплавникобаль
QF-2I	15	Φ4	O <sub>2</sub> , N <sub>2</sub> , Air	G5/8-14-RH-EXT	PZ19.2	22.5 <sup>+0</sup> <sub>-2.25</sub> MPa	Сплавникобаль
QF-2P	15	Φ4	O <sub>2</sub> , N <sub>2</sub> , Air	W21.8-14-RH-EXT	PZ27.8	22.5 <sup>+0</sup> <sub>-2.34</sub> MPa	Сплавникобаль
QF-2P1	15	Φ4	O <sub>2</sub> , N <sub>2</sub> , Air	W21.8-14-RH-EXT	PZ27.8	NO	Сплавникобаль



Type	WP (MPa)	DN (mm)	Medium	Outlet thread	Inlet thread	Safety device	Frame material
QF-2E	15	Φ3	O <sub>2</sub> , N <sub>2</sub> , Air	0.903-14NGC-RH-EXT	PZ27.8	22.5 <sup>+0</sup> <sub>-2.35</sub> MPa	Сплавникобаль



Type	WP (MPa)	DN (mm)	Medium	Outlet thread	Inlet thread	Safety device	Frame material
QF-27	15	Φ3	O <sub>2</sub> , N <sub>2</sub> , Air	W22-14-RH-EXT	J5B8245V1	22.5 <sup>+0</sup> <sub>-2.35</sub> MPa	Сплавникобаль
QF-27A	15	Φ3	O <sub>2</sub> , N <sub>2</sub> , Air	7/8-14UNF-RH-EXT	J5B8245V1	22.5 <sup>+0</sup> <sub>-2.35</sub> MPa	Сплавникобаль



Type	WP (MPa)	DN (mm)	Medium	Outlet thread	Inlet thread	Safety device	Frame material
G-12-02	15	Φ4	O <sub>2</sub> , N <sub>2</sub> , Air	G5/8-14-RH-EXT	PZ27.8	22.5 <sup>+0</sup> <sub>-2.35</sub> MPa	Сплавникобаль
G-12-04	20	Φ4	O <sub>2</sub> , N <sub>2</sub> , Air	G5/8-14-RH-EXT	PZ27.8	28 ± 2 MPa	Сплавникобаль



## Вентили баллонные OXYGEN CYLINDER VALVE



Type	WP (MPa)	DN (mm)	Medium	Outlet thread	Inlet thread	Safety device	Frame modality
QF-2F	15	Ø4	O <sub>2</sub> , N <sub>2</sub> , Air	G5/8-14-RH-EXT	PZ27.8	22.5 <sup>0</sup> <sub>-0.2</sub> MPa	Сальниковый
QF-2F1	15	Ø4	O <sub>2</sub> , N <sub>2</sub> , Air	G5/8-14-RH-EXT	BS341 1"	22.5 <sup>0</sup> <sub>-0.2</sub> MPa	Сальниковый



Type	WP (MPa)	DN (mm)	Medium	Outlet thread	Inlet thread	Safety device	Frame modality
QF-5	20	Ø4	O <sub>2</sub> , N <sub>2</sub> , Air	G5/8-14-RH-EXT	PZ27.8	28 ± 2MPa	Сальниковый
QF-5B	20	Ø4	O <sub>2</sub> , N <sub>2</sub> , Air	W21.8-14-RH-EXT	3/4-14NGT	28 ± 2MPa	Сальниковый



Type	WP (MPa)	DN (mm)	Medium	Outlet thread	Inlet thread	Safety device	Frame modality
QF-5A	20	Ø4	O <sub>2</sub> , N <sub>2</sub> , Air	W21.8-14-RH-EXT	PZ27.8	NO	Сальниковый
QF-5A1	20	Ø4	O <sub>2</sub> , N <sub>2</sub> , Air	W21.8-14-RH-EXT	3/4-14NGT	NO	Сальниковый

## Вентили баллонные OXYGEN CYLINDER VALVE

Type	WP (MPa)	DN (mm)	Medium	Outlet thread	Inlet thread	Safety device	Frame materiality
QF-2C2	15	Φ4	O <sub>2</sub> , N <sub>2</sub> , Air	G5/8-14-RH-EXT	PZ27.8	NO	Сплав никобаль



Type	WP (MPa)	DN (mm)	Medium	Outlet thread	Inlet thread	Safety device	Frame materiality
G-12-00	15	Φ4	O <sub>2</sub> , N <sub>2</sub> , Air	W21.8-14-RH-EXT	PZ27.8	NO	Сплав никобаль
G-12-03	20	Φ4	O <sub>2</sub> , N <sub>2</sub> , Air	W21.8-14-RH-EXT	PZ27.8	NO	Сплав никобаль



Type	WP (MPa)	DN (mm)	Medium	Outlet thread	Inlet thread	Safety device	Frame materiality
QF-2C1	15	Φ4	O <sub>2</sub> , N <sub>2</sub> , Air	G5/8-14-RH-EXT	PZ27.8	NO	Сплав никобаль
QF-2C5	15	Φ4	O <sub>2</sub> , N <sub>2</sub> , Air	G5/8-14-RH-EXT	PZ27.8	22.5 <sup>0</sup> <sub>-0.25</sub> MPa	Сплав никобаль



Type	WP (MPa)	DN (mm)	Medium	Outlet thread	Inlet thread	Safety device	Frame materiality
FU-1A	15	Φ4	O <sub>2</sub> , N <sub>2</sub> , Air	W22-14-RH-INT	1-11 1/2NPT	22.5 <sup>0</sup> <sub>-0.25</sub> MPa	Сплав никобаль
FU-1B	20	Φ4	O <sub>2</sub> , N <sub>2</sub> , Air	W22-14-RH-INT	JISB8246V2	22.5 <sup>0</sup> <sub>-0.25</sub> MPa	Сплав никобаль



## Вентили баллонные OXYGEN CYLINDER VALVE



Type	WP (MPa)	DN (mm)	Medium	Outlet thread	Inlet thread	Safety device	Frame modality
QF-2D	15	Φ4	O <sub>2</sub> , N <sub>2</sub> , Air	G5/8-14-RH-INT	PZ27.8	NO	Игольчатый
QF-2D1	15	Φ4	O <sub>2</sub> , N <sub>2</sub> , Air	G5/8-14-RH-INT	BS341 1"	NO	Игольчатый
QF-2D2	15	Φ4	O <sub>2</sub> , N <sub>2</sub> , Air	G5/8-14-RH-INT	3/4-14NGT	NO	Игольчатый



Type	WP (MPa)	DN (mm)	Medium	Outlet thread	Inlet thread	Safety device	Frame modality
QF-7A	15	Φ4	O <sub>2</sub> , N <sub>2</sub> , Air	G5/8-14-RH-INT	PZ27.8	NO	Игольчатый
QF-7A1	15	Φ4	O <sub>2</sub> , N <sub>2</sub> , Air	G5/8-14-RH-INT	BS341 1"	NO	Игольчатый



Type	WP (MPa)	DN (mm)	Medium	Outlet thread	Inlet thread	Safety device	Frame modality
QF-7B	15	Φ4	O <sub>2</sub> , N <sub>2</sub> , Air	G5/8-14-RH-INT	PZ27.8	NO	Игольчатый
QF-7B1	15	Φ4	O <sub>2</sub> , N <sub>2</sub> , Air	G5/8-14-RH-INT	BS341 1"	NO	Игольчатый
QF-7B2	15	Φ4	O <sub>2</sub> , N <sub>2</sub> , Air	G5/8-14-RH-INT	1-111/2NGT	NO	Игольчатый
QF-7B3	15	Φ4	O <sub>2</sub> , N <sub>2</sub> , Air	G5/8-14-RH-INT	R1 1/4	NO	Игольчатый



Type	WP (MPa)	DN (mm)	Medium	Outlet thread	Inlet thread	Safety device	Frame modality
QF-12A	20	Φ4	O <sub>2</sub> , N <sub>2</sub> , Air	G5/8-14-RH-INT	BS341 1"	NO	Сальниковый
QF-12A3	20	Φ4	O <sub>2</sub> , N <sub>2</sub> , Air	G5/8-14-RH-INT	PZ27.8	NO	Сальниковый

## Вентили баллонные OXYGEN CYLINDER VALVE

Type	WP (MPa)	DN (mm)	Medium	Outlet thread	Inlet thread	Safety device	Frame materiality
MA2-10	15	Φ4	O <sub>2</sub> , N <sub>2</sub> , Air	G5/8-14-RH-1N	PZ27.8	22.5 <sup>+0</sup> <sub>-2.25</sub> MPa	Сплавникобый



Type	WP (MPa)	DN (mm)	Medium	Outlet thread	Inlet thread	Safety device	Frame materiality
MA2-10A	15	Φ4	O <sub>2</sub> , N <sub>2</sub> , Air	G5/8-14-RH-INT	PZ27.8	22.5 <sup>+0</sup> <sub>-2.25</sub> MPa	Сплавникобый
MA2-10B	15	Φ4	O <sub>2</sub> , N <sub>2</sub> , Air	G5/8-14-RH-INT	PZ27.8	NO	Сплавникобый



Type	WP (MPa)	DN (mm)	Medium	Outlet thread	Inlet thread	Safety device	Frame materiality
F-3	15	Φ4	O <sub>2</sub> , N <sub>2</sub> , Air	G5/8-14-RH-INT	PZ27.8	22.5 <sup>+0</sup> <sub>-2.25</sub> MPa	Сплавникобый
F-3A	15	Φ4	O <sub>2</sub> , N <sub>2</sub> , Air	G5/8-14-RH-INT	BS341 1"	22.5 <sup>+0</sup> <sub>-2.25</sub> MPa	Сплавникобый



Type	WP (MPa)	DN (mm)	Medium	Outlet thread	Inlet thread	Safety device	Frame materiality
F-4A	15	Φ4	O <sub>2</sub> , N <sub>2</sub> , Air	G5/8-14-RH-INT	PZ27.8	NO	Сплавникобый
F-4A1	20	Φ4	O <sub>2</sub> , N <sub>2</sub> , Air	G5/8-14-RH-INT	BS341 1"	NO	Сплавникобый



## Вентили баллонные OXYGEN CYLINDER VALVE



Type	WP (MPa)	DN (mm)	Medium	Outlet thread	Inlet thread	Safety device	Frame modality
QF-2G	15	Φ4	O <sub>2</sub> , N <sub>2</sub> , Air	G5/8-14-RH-INT	PZ27.8	22.5 <sup>+0</sup> <sub>-0.25</sub> MPa	Сальниковый
QF-2G1	15	Φ4	O <sub>2</sub> , N <sub>2</sub> , Air	G5/8-14-RH-INT	BS3411'	22.5 <sup>+0</sup> <sub>-0.25</sub> MPa	Сальниковый
QF-2G2	20	Φ4	O <sub>2</sub> , N <sub>2</sub> , Air	G5/8-14-RH-INT	PZ27.8	28±2MPa	Сальниковый



Type	WP (MPa)	DN (mm)	Medium	Outlet thread	Inlet thread	Safety device	Frame modality
D-11	15	Φ4	O <sub>2</sub> , N <sub>2</sub> , Air	G5/8-14-RH-INT	PZ27.8	22.5 <sup>+0</sup> <sub>-0.25</sub> MPa	Сальниковый
D-11A	15	Φ4	O <sub>2</sub> , N <sub>2</sub> , Air	G5/8-14-RH-INT	BS3411'	22.5 <sup>+0</sup> <sub>-0.25</sub> MPa	Сальниковый



Type	WP (MPa)	DN (mm)	Medium	Outlet thread	Inlet thread	Safety device	Frame modality
F-4	15	Φ4	O <sub>2</sub> , N <sub>2</sub> , Air	G5/8-14-RH-INT	PZ27.8	22.5 <sup>+0</sup> <sub>-0.25</sub> MPa	Сальниковый
F-4C	15	Φ4	O <sub>2</sub> , N <sub>2</sub> , Air	G5/8-14-RH-INT	3/4-14NGT	22.5 <sup>+0</sup> <sub>-0.25</sub> MPa	Сальниковый



Type	WP (MPa)	DN (mm)	Medium	Outlet thread	Inlet thread	Safety device	Frame modality
QF-6	15	Φ4	O <sub>2</sub> , N <sub>2</sub> , Air	G5/8-14-RH-INT	PZ27.8	22.5 <sup>+0</sup> <sub>-0.25</sub> MPa	Сальниковый
QF-6B	15	Φ4	O <sub>2</sub> , N <sub>2</sub> , Air	W22.5-14-RH-INT	PZ27.8	22.5 <sup>+0</sup> <sub>-0.25</sub> MPa	Сальниковый

## Вентили баллонные

### OXYGEN CYLINDER VALVE

Type	WP (MPa)	DN (mm)	Medium	Outlet thread	Inlet thread	Safety device	Frame materiality
QF-6A	15	Ø4	O <sub>2</sub> , N <sub>2</sub> , Air	G5/8-14-RH-INT	PZ27.8	NO	Самоникновый
QF-6A1	15	Ø4	O <sub>2</sub> , N <sub>2</sub> , Air	G5/8-14-RH-INT	BS341 1"	NO	Самоникновый



Type	WP (MPa)	DN (mm)	Medium	Outlet thread	Inlet thread	Safety device	Frame materiality
NB-6	15	Ø4	O <sub>2</sub> , N <sub>2</sub> , Air	G5/8-14-RH-INT	PZ27.8	NO	Самоникновый
NB-6A	15	Ø4	O <sub>2</sub> , N <sub>2</sub> , Air	G5/8-14-RH-INT	BS341 1"	NO	Самоникновый



Type	WP (MPa)	DN (mm)	Medium	Outlet thread	Inlet thread	Safety device	Frame materiality
F-4B	15	Ø4	O <sub>2</sub> , N <sub>2</sub> , Air	G5/8-14-RH-INT	PZ27.8	NO	Самоникновый
F-4B1	15	Ø4	O <sub>2</sub> , N <sub>2</sub> , Air	G5/8-14-RH-INT	BS341 1"	NO	Самоникновый



Type	WP (MPa)	DN (mm)	Medium	Outlet thread	Inlet thread	Safety device	Frame materiality
QF-7E	15	Ø4	O <sub>2</sub> , N <sub>2</sub> , Air	G5/8-14-RH-INT	PZ27.8	NO	Самоникновый
QF-7E1	15	Ø4	O <sub>2</sub> , N <sub>2</sub> , Air	G5/8-14-RH-INT	BS341 1"	NO	Самоникновый



## Вентили баллонные для ацетилена DISSOLVED ACETYLENE CYLINDER VALVE



Type	WP (MPa)	DN (mm)	Medium	Outlet thread	Inlet thread	Safety device	Frame modality
QF-15	3	φ4	C <sub>2</sub> H <sub>2</sub>	φ21Clamp	PZ39	100 ± 5°C	Исключающий
QF-15B	3	φ4	C <sub>2</sub> H <sub>2</sub>	φ21Clamp	PZ27.8	NO	Исключающий
QF-15B1	3	φ4	C <sub>2</sub> H <sub>2</sub>	φ21Clamp	1-11 1/2NGT	100 ± 5°C	Исключающий
QF-15B4	3	φ4	C <sub>2</sub> H <sub>2</sub>	φ21Clamp	JISB8244	105 ± 5°C	Исключающий
QF-15D	3	φ4	C <sub>2</sub> H <sub>2</sub>	φ21Clamp	PZ39	NO	Исключающий



Type	WP (MPa)	DN (mm)	Medium	Outlet thread	Inlet thread	Safety device	Frame modality
YF-2	3	φ4	C <sub>2</sub> H <sub>2</sub>	φ21Clamp	PZ39	100 ± 5°C	Исключающий
YF-2A	3	φ4	C <sub>2</sub> H <sub>2</sub>	φ21Clamp	1-11 1/2NGT	100 ± 5°C	Исключающий
YF-2B	3	φ4	C <sub>2</sub> H <sub>2</sub>	φ21Clamp	PZ27.8	NO	Исключающий



Type	WP (MPa)	DN (mm)	Medium	Outlet thread	Inlet thread	Safety device	Frame modality
QF-15A	3	φ4	C <sub>2</sub> H <sub>2</sub>	G1/2-14-RH-EXT	PZ39	100 ± 5°C	Исключающий
QF-15A1	3	φ4	C <sub>2</sub> H <sub>2</sub>	G1/2-14-LH-EXT	PZ39	100 ± 5°C	Исключающий
QF-15A2	3	φ4	C <sub>2</sub> H <sub>2</sub>	G5/8-14-LH-EXT	PZ39	100 ± 5°C	Исключающий
QF-15A5	3	φ4	C <sub>2</sub> H <sub>2</sub>	0.825-14NGO-RH-EXT	PZ39	NO	Исключающий
QF-15A13	3	φ4	C <sub>2</sub> H <sub>2</sub>	0.825-14NGO-RH-EXT	PZ39	100 ± 5°C	Исключающий



Type	WP (MPa)	DN (mm)	Medium	Outlet thread	Inlet thread	Safety device	Frame modality
QF-15A8	3	φ4	C <sub>2</sub> H <sub>2</sub>	G1/2-14-RH-EXT	1-11 1/2NGT	100 ± 5°C	Исключающий
QF-15A9	3	φ4	C <sub>2</sub> H <sub>2</sub>	0.825-14NGO-RH-EXT	1-11 1/2NGT	100 ± 5°C	Исключающий

## Вентили баллонные для ацетилена DISSOLVED ACETYLENE CYLINDER VALVE

Type	WP (MPa)	DN (mm)	Medium	Outlet thread	Inlet thread	Safety device	Frame material
PF5-1	3	Ø4	C <sub>2</sub> H <sub>2</sub>	G5/8-14-LH-INT	PZ39	NO	Июльчатый
PF5-1A	3	Ø4	C <sub>2</sub> H <sub>2</sub>	G5/8-14-LH-INT	PZ39	100 ± 5°C	Июльчатый
PF5-1B	3	Ø4	C <sub>2</sub> H <sub>2</sub>	G5/8-14-LH-INT	1-11 1/2NGT	NO	Июльчатый
PF5-1B1	3	Ø4	C <sub>2</sub> H <sub>2</sub>	G5/8-14-LH-INT	1-11 1/2NGT	100 ± 5°C	Июльчатый



Type	WP (MPa)	DN (mm)	Medium	Outlet thread	Inlet thread	Safety device	Frame material
PF5-2	3	Ø3	C <sub>2</sub> H <sub>2</sub>	G5/8-14-LH-INT	BS341 1'	NO	Июльчатый
PF5-2A	3	Ø3	C <sub>2</sub> H <sub>2</sub>	G5/8-14-LH-INT	BS341 1'	100 ± 5°C	Июльчатый
PF5-2B	3	Ø3	C <sub>2</sub> H <sub>2</sub>	G5/8-14-LH-INT	PZ27.8	100 ± 5°C	Июльчатый



Type	WP (MPa)	DN (mm)	Medium	Outlet thread	Inlet thread	Safety device	Frame material
PF5-4	3	Ø4	C <sub>2</sub> H <sub>2</sub>	G5/8-14-LH-INT	PZ39	NO	Сальниковый
PF5-4A	3	Ø4	C <sub>2</sub> H <sub>2</sub>	G5/8-14-LH-INT	PZ39	100 ± 5°C	Сальниковый



Type	WP (MPa)	DN (mm)	Medium	Outlet thread	Inlet thread	Safety device	Frame material
PF5-5	3	Ø4	C <sub>2</sub> H <sub>2</sub>	G5/8-14-LH-INT	PZ27.8	NO	Июльчатый
PF5-5A	3	Ø4	C <sub>2</sub> H <sub>2</sub>	G5/8-14-LH-INT	BS341 1'	NO	Июльчатый
PF5-5A1	3	Ø4	C <sub>2</sub> H <sub>2</sub>	G5/8-14-LH-INT	BS341 1'	100 ± 5°C	Июльчатый



**Вентили баллонные для ацетилена**  
**DISSOLVED ACETYLENE CYLINDER VALVE**



Type	WP (MPa)	DN (mm)	Medium	Outlet thread	Inlet thread	Safety device	Frame modality
YF-3	3	Φ4	C <sub>2</sub> H <sub>2</sub>	G5/8-14-LH-INT	PZ39	100 ± 5°C	Игольчатый
YF-3A	3	Φ4	C <sub>2</sub> H <sub>2</sub>	G5/8-14-LH-INT	1-11 1/2NGT	NO	Игольчатый
YF-3B	3	Φ4	C <sub>2</sub> H <sub>2</sub>	G5/8-14-LH-INT	PZ27.8	NO	Игольчатый
YF-3C	3	Φ4	C <sub>2</sub> H <sub>2</sub>	G5/8-14-LH-INT	BS3411'	NO	Игольчатый



Type	WP (MPa)	DN (mm)	Medium	Outlet thread	Inlet thread	Safety device	Frame modality
YF-4	3	Φ4	C <sub>2</sub> H <sub>2</sub>	G5/8-14-LH-INT	PZ27.8	NO	Игольчатый
YF-4A	3	Φ4	C <sub>2</sub> H <sub>2</sub>	G5/8-14-LH-INT	1-11 1/2NGT	NO	Игольчатый



Type	WP (MPa)	DN (mm)	Medium	Outlet thread	Inlet thread	Safety device	Frame modality
QF-7D4	3	Φ4	C <sub>2</sub> H <sub>2</sub>	G5/8-14-LH-INT	PZ27.8	100 ± 5°C	Сальниковый



Type	WP (MPa)	DN (mm)	Medium	Outlet thread	Inlet thread	Safety device	Frame modality
PF5-3	3	Φ4	C <sub>2</sub> H <sub>2</sub>	G5/8-14-LH-INT	PZ39	NO	Игольчатый
PF5-3A	3	Φ4	C <sub>2</sub> H <sub>2</sub>	G5/8-14-LH-INT	PZ39	100 ± 5°C	Игольчатый
PF5-3B	3	Φ4	C <sub>2</sub> H <sub>2</sub>	G5/8-14-LH-INT	1-11 1/2NGT	NO	Игольчатый
PF5-3B1	3	Φ4	C <sub>2</sub> H <sub>2</sub>	G5/8-14-LH-INT	1-11 1/2NGT	100 ± 5°C	Игольчатый

**Вентили баллонные для ацетилена**  
**DISSOLVED ACETYLENE CYLINDER VALVE**

Type	WP (MPa)	DN (mm)	Medium	Outlet thread	Inlet thread	Safety device	Frame materiality
PF5-6	3	Ø4	C <sub>2</sub> H <sub>2</sub>	G5/8-14-LH-INT	NF34	NO	Самоникомый
PF5-6A	3	Ø4	C <sub>2</sub> H <sub>2</sub>	G5/8-14-LH-INT	PZ27.8	NO	Самоникомый



Type	WP (MPa)	DN (mm)	Medium	Outlet thread	Inlet thread	Safety device	Frame materiality
QF-36B	3	Ø3	C <sub>2</sub> H <sub>2</sub>	G5/8-14-LH-INT	BS341 1'	NO	Самоникомый
QF-36B1	3	Ø3	C <sub>2</sub> H <sub>2</sub>	G5/8-14-LH-INT	BS341 1'	100 ± 5°C	Самоникомый
QF-36B2	3	Ø3	C <sub>2</sub> H <sub>2</sub>	G5/8-14-LH-INT	PZ27.8	100 ± 5°C	Самоникомый



Type	WP (MPa)	DN (mm)	Medium	Outlet thread	Inlet thread	Safety device	Frame materiality
QF-36C	3	Ø4	C <sub>2</sub> H <sub>2</sub>	Ø21Clamp	NF34	NO	Самоникомый
QF-36C1	3	Ø4	C <sub>2</sub> H <sub>2</sub>	Ø21Clamp	PZ39	NO	Самоникомый



Type	WP (MPa)	DN (mm)	Medium	Outlet thread	Inlet thread	Safety device	Frame materiality
QF-36D	3	Ø4	C <sub>2</sub> H <sub>2</sub>	G5/8-14-LH-INT	BS341 1'	NO	Самоникомый
QF-36D1	3	Ø4	C <sub>2</sub> H <sub>2</sub>	G5/8-14-LH-INT	PZ27.8	NO	Самоникомый



## Вентиль баллонный для хлора LIQUID CHLORINE CYLINDER VALVE



Type	WP (MPa)	DN (mm)	Medium	Outlet thread	Inlet thread	Safety device	Frame material	Spindle material
QF-10A	2	Φ6	Cl <sub>2</sub>	G3/4-14-RH-EXT	PZ27.8	70 ± 3 °C	Игольчатый	Нержавеющая сталь
QF-10A1	2	Φ6	Cl <sub>2</sub>	G3/4-14-RH-EXT	BS341 1"	70 ± 3 °C	Игольчатый	Нержавеющая сталь
QF-10A2	2	Φ6	Cl <sub>2</sub>	G5/8-14-RH-EXT	PZ27.8	70 ± 3 °C	Игольчатый	Нержавеющая сталь



Type	WP (MPa)	DN (mm)	Medium	Outlet thread	Inlet thread	Safety device	Frame material	Spindle material
QF-10B	2	Φ6	Cl <sub>2</sub>	G3/4-14-RH-EXT	PZ27.8	NO	Игольчатый	Нержавеющая сталь
QF-10B1	2	Φ6	Cl <sub>2</sub>	M24 x 3-RH-EXT	PZ27.8	NO	Игольчатый	Нержавеющая сталь
QF-10B2	2	Φ6	Cl <sub>2</sub>	G5/8-14-RH-EXT	PZ27.8	NO	Игольчатый	Нержавеющая сталь



Type	WP (MPa)	DN (mm)	Medium	Outlet thread	Inlet thread	Safety device	Frame material	Spindle material
QF-10C	2	Φ6	Cl <sub>2</sub>	G3/4-14-RH-EXT	PZ27.8	NO	Игольчатый	Сталь
QF-10C3	2	Φ6	Cl <sub>2</sub>	G3/4-14-RH-EXT	PZ27.8	NO	Игольчатый	Сталь
QF-10C4	2	Φ6	Cl <sub>2</sub>	W21.8-14-RH-EXT	PZ27.8	NO	Игольчатый	Сталь



Type	WP (MPa)	DN (mm)	Medium	Outlet thread	Inlet thread	Safety device	Frame material	Spindle material
QF-10D1	2	Φ6	Cl <sub>2</sub>	G5/8-14-RH-EXT	PZ27.8	NO	Игольчатый	Нержавеющая сталь
QF-10D3	2	Φ6	Cl <sub>2</sub>	G5/8-14-RH-EXT	3/4-14NGT	NO	Игольчатый	Нержавеющая сталь

**Вентиль балонный для водорода**  
**HYDROGEN CYLINDER VALVE**

Type	WP (MPa)	DN (mm)	Medium	Outlet thread	Inlet thread	Safety device	Frame materiality
QF-30	15	Ø4	H <sub>2</sub>	W21.8-14-LH-EXT	PZ27.8	NO	Самоникомый



Type	WP (MPa)	DN (mm)	Medium	Outlet thread	Inlet thread	Safety device	Frame materiality
QF-30A	15	Ø4	H <sub>2</sub>	W21.8-14-LH-EXT	PZ27.8	NO	Самоникомый
QF-30C	15	Ø4	H <sub>2</sub>	W21.8-14-LH-EXT	PZ27.8	22.5 <sup>+0.25</sup> MPa	Самоникомый



Type	WP (MPa)	DN (mm)	Medium	Outlet thread	Inlet thread	Safety device	Frame materiality
QF-30D	15	Ø4	H <sub>2</sub>	G5/8-14-LH-INT	BS341 1"	NO	Самоникомый
QF-30D1	15	Ø4	H <sub>2</sub>	G5/8-14-LH-INT	PZ27.8	NO	Самоникомый
QF-30D2	15	Ø4	H <sub>2</sub>	G5/8-14-LH-INT	BS341 1"	22.5 <sup>+0.25</sup> MPa	Самоникомый



Type	WP (MPa)	DN (mm)	Medium	Outlet thread	Inlet thread	Safety device	Frame materiality
F-3A1	15	Ø4	H <sub>2</sub>	G5/8-14-LH-INT	BS341 1"	22.5 <sup>+0.25</sup> MPa	Самоникомый



## Вентиль балонный для фреона FREON CYLINDER VALVE



Type	WP (MPa)	DN (mm)	Medium	Outlet thread	Inlet thread	Safety device	Frame modality
QF-13	3	Φ6	Freon	G3/4-14-RH-EXT	P227.8	NO	Изоляционный
QF-13L	3	Φ8	Freon	G3/4-14-RH-EXT	P227.8	NO	Изоляционный



Type	WP (MPa)	DN (mm)	Medium	Outlet thread	Inlet thread	Safety device	Frame modality
QF-13A	12.5	Φ4	Freon	G3/4-14-RH-EXT	P227.8	NO	Сальниковый
QF-13A1	12.5	Φ6	Freon	G3/4-14-RH-EXT	P227.8	NO	Сальниковый



Type	WP (MPa)	DN (mm)	Medium	Outlet thread	Inlet thread	Safety device	Frame modality
QF-13C	3	Φ4	Freon	W20-16-RH-EXT	P227.8	100±5°C	Сальниковый
	3	Φ6	Freon	W25-14-RH-EXT	P227.8	100±5°C	Сальниковый
QF-13C1	3	Φ4	Freon	W20-16-RH-EXT	P227.8	100±5°C	Сальниковый
	3	Φ6	Freon	1.03-14NGO-RH-EXT	P227.8	100±5°C	Сальниковый

## Вентиль балонный для фреона

### FREON CYLINDER VALVE

Type	WP (MPa)	DN (mm)	Medium	Outlet thread	Inlet thread	Safety device	Frame nationality
CF-13B	4	φ11	Freon	W26-14-RH-EXT	P227.8	NO	САХАРСКОБОЙ
CF-13B2	4	φ11	Freon	G3/4-14-RH-EXT	P227.8	NO	САХАРСКОБОЙ



## Клапан предохранительный

Type	WP (MPa)	DN (mm)	Medium	Outlet thread	Inlet thread	Safety device	Frame nationality
AQF-1	4.8	φ14	Freon	NO	P227.8	4.8MPa 3.6MPa	-
AQF-1A	3.6	φ14	Freon	NO	P227.8	3.6MPa 2.7MPa	-
AQF-1B	3.6	φ14	Freon	NO	P227.8	1.8MPa 1.5MPa	-



## Клапан запорный

Type	WP (MPa)	DN (mm)	Medium	Outlet thread	Inlet thread	Safety device	Frame nationality
FV-500B	4	φ12	Freon	W22.5-14-LH-INT	R1 1/4	NO	-



## Указатель уровня газа

Type	WP (MPa)	DN (mm)	Medium	Outlet thread	Inlet thread	Safety device	Frame nationality
MTG-1	4	φ1.2	Freon	NO	R1	NO	-



## Вентиль балонный (Co2) CARBON DIOXIDE CYLINDER VALVE



Type	WP (MPa)	DN (mm)	Medium	Outlet thread	Inlet thread	Safety device	Frame modality
QF-2A	15	Φ6	CO <sub>2</sub>	G5/8-14-RH-EXT	P227.8 M12x1.25-INT	22.5 <sup>0</sup> <sub>-0.25</sub> MPa	Сальниковый



Type	WP (MPa)	DN (mm)	Medium	Outlet thread	Inlet thread	Safety device	Frame modality
QF-2A1	15	Φ6	CO <sub>2</sub>	0.860-14T.P.I.-RH-EXT	BS341 1"	22.5 <sup>0</sup> <sub>-0.25</sub> MPa	Сальниковый
QF-2A6	15	Φ6	CO <sub>2</sub>	W21.8-14-RH-EXT	P227.8	22.5 <sup>0</sup> <sub>-0.25</sub> MPa	Сальниковый



Type	WP (MPa)	DN (mm)	Medium	Outlet thread	Inlet thread	Safety device	Frame modality
QF-2A5	15	Φ4	CO <sub>2</sub>	0.860-14T.P.I.-RH-EXT	BS341 1" M16x1-INT	22.5 <sup>0</sup> <sub>-0.25</sub> MPa	Сальниковый



Type	WP (MPa)	DN (mm)	Medium	Outlet thread	Inlet thread	Safety device	Frame modality
QF-2A12	15	Φ6	CO <sub>2</sub>	M22x1.5-RH-EXT	M22x1.5	NO	Сальниковый

## Вентиль балонный (CO<sub>2</sub>)

### CARBON DIOXIDE CYLINDER VALVE

Type	WP (MPa)	DN (mm)	Medium	Outlet thread	Inlet thread	Safety device	Frame materiality
F-2M	15	Ø4	CO <sub>2</sub>	W22-14-RH-EXT	JISB6246V2	NO	Сплавник
F-2MA	15	Ø4	CO <sub>2</sub>	W21.7-14-LH-EXT	PZ27.8	NO	Сплавник
F-2MB	15	Ø4	CO <sub>2</sub>	W21.7-14-RH-EXT	1-11 1/2NPT	NO	Сплавник



Type	WP (MPa)	DN (mm)	Medium	Outlet thread	Inlet thread	Safety device	Frame materiality
PF6-3	14.7	Ø7	CO <sub>2</sub>	G5/8-14-RH-EXT	PZ27.8	19±0.05MPa	-



Type	WP (MPa)	DN (mm)	Medium	Outlet thread	Inlet thread	Safety device	Frame materiality
PF6-3A	14.7	Ø9.5	CO <sub>2</sub>	G5/8-14-RH-EXT	PZ27.8	19±0.05MPa	-



Type	WP (MPa)	DN (mm)	Medium	Outlet thread	Inlet thread	Safety device	Frame materiality
PF6-3B	14.7	Ø13	CO <sub>2</sub>	G5/8-14-RH-EXT	PZ39	19±0.05MPa	-



## Вентиль балонный (Co<sub>2</sub>) CARBON DIOXIDE CYLINDER VALVE



Type	WP (MPa)	DN (mm)	Medium	Outlet thread	Inlet thread	Safety device	Frame madality
QF-35C	15	Φ6	CO <sub>2</sub>	G1/2-14-RH-EXT	1.125-12UNF-2A	22.5 <sup>0</sup> <sub>-0.05</sub> MPa	Сальниковый
QF-35C5	12.4	Φ7	CO <sub>2</sub>	W21.8-14-RH-EXT	1.125-12UNF-2A	20.7 <sup>0</sup> <sub>-0.07</sub> MPa	Сальниковый
QF-35C8	20	Φ6	CO <sub>2</sub>	G1/2-14-RH-EXT	1.125-12UNF-2A	30 <sup>-0.3</sup> MPa	Сальниковый

## Вентиль балонный (Ar) ARGON CYLINDER VALVE



Type	WP (MPa)	DN (mm)	Medium	Outlet thread	Inlet thread	Safety device	Frame madality
PX-32A	15	Φ4	Ar	G5/8-14-RH-EXT	P227.8	NO	Сальниковый
PX-32A3	15	Φ4	Ar	W21.8-14-RH-EXT	P227.8	NO	Сальниковый



Type	WP (MPa)	DN (mm)	Medium	Outlet thread	Inlet thread	Safety device	Frame madality
PX-32A1	15	Φ4	Ar	G5/8-14-RH-EXT	P227.8	NO	Сальниковый



Type	WP (MPa)	DN (mm)	Medium	Outlet thread	Inlet thread	Safety device	Frame madality
PX-34	15	Φ4	Ar	0.965-14NGC-RH-INT	P227.8	NO	Сальниковый
PX-34A	15	Φ4	Ar	G5/8-14-RH-INT	P227.8	NO	Сальниковый
PX-34A1	15	Φ4	Ar	G5/8-14-RH-INT	BS341 1"	NO	Сальниковый

## Вентиль балонный для полипропилена

### PROPYLENE CYLINDER VALVE

Type	WP (MPa)	DN (mm)	Medium	Outlet thread	Inlet thread	Safety device	Frame materiality
BXF-1	2.5	Ø7	C <sub>3</sub> H <sub>6</sub>	M22×1.5-LH-INT	PZ27.8	3.4 ± 0.1 MPa	Сальниковый
BXF-1A	2.5	Ø7	C <sub>3</sub> H <sub>6</sub>	M22×1.5-LH-INT	PZ27.8 M8-INT	3.4 ± 0.1 MPa	Сальниковый



Type	WP (MPa)	DN (mm)	Medium	Outlet thread	Inlet thread	Safety device	Frame materiality
BWF-1	2.2	Ø7	C <sub>3</sub> H <sub>6</sub>	M22×1.5-LH-INT	PZ27.8	3.2 ± 0.1 MPa	Сальниковый
BWF-1A	2.2	Ø7	C <sub>3</sub> H <sub>6</sub>	M22×1.5-LH-INT	PZ27.8 M12×1-INT	3.2 ± 0.1 MPa	Сальниковый
BWF-2	2.2	Ø7	C <sub>3</sub> H <sub>6</sub>	W22.5×1.5-LH-INT	PZ27.8	3.2 ± 0.1 MPa	Сальниковый



## Вентиль балонный для жидкого хлора

### LIQUID AMMONIA CYLINDER VALVE

Type	WP (MPa)	DN (mm)	Medium	Outlet thread	Inlet thread	Safety device	Frame materiality
QF-11	3	Ø6	NH <sub>3</sub>	G1/2-14-RH-EXT	PZ27.8	NO	Сальниковый
QF-11A	3	Ø6	NH <sub>3</sub>	G1/2-14-RH-EXT	PZ27.8	70 ± 2 °C	Сальниковый
QF-11C	3	Ø6	NH <sub>3</sub>	W21.8-14-RH-EXT	PZ27.8	NO	Сальниковый



Type	WP (MPa)	DN (mm)	Medium	Outlet thread	Inlet thread	Safety device	Frame materiality
QF-11B	3	Ø7	NH <sub>3</sub>	W21.8-14-RH-EXT	PZ27.8	NO	Сальниковый



## Вентили/клапана LPG LPG CYLINDER VALVE



Type	WP (MPa)	DN (mm)	Medium	Outlet thread	Inlet thread	Safety device
YSF-1	2.5	Ø7	LPG	M22x1.5-LH-INT	P227.8	NO



Type	WP (MPa)	DN (mm)	Medium	Outlet thread	Inlet thread	Safety device
YSF-4	1.75	Ø6	LPG	Ø1.8	3/4-14NGT	2.6±0.26 MPa



Type	WP (MPa)	DN (mm)	Medium	Outlet thread	Inlet thread	Safety device
YSF-5	2.5	Ø7	LPG	W21.7-14-LH-EXT	P227.8	NO



Type	WP (MPa)	DN (mm)	Medium	Outlet thread	Inlet thread	Safety device
YSF-6	1.75	Ø6	LPG	0.885-14NGO-RH-INT	3/4-14NGT	2.1-2.6 MPa
YSF-6A	2.1	Ø6	LPG	0.885-14NGO-RH-INT	3/4-14NGT	3.4-3.8 MPa
YSF-6B	3.5	Ø6	LPG	0.885-14NGO-RH-INT	3/4-14NGT	4.2-4.8 MPa

## Вентили/клапана LPG

### LPG CYLINDER VALVE

Type	WP (MPa)	DN (mm)	Medium	Outlet thread	Inlet thread	Safety device
YSF-7	1.75	Ø5.5	LPG	0.885-14NGO-RH-INT	W28.6x1/14	2.5±0.26 MPa



Type	WP (MPa)	DN (mm)	Medium	Outlet thread	Inlet thread	Safety device
YSF-8	2.5	Ø7	LPG	M22x1.5-LH-INT	PZ27.8	NO



Type	WP (MPa)	DN (mm)	Medium	Outlet thread	Inlet thread	Safety device
YSF-9	2.5	Ø8	LPG	M22x1.5-LH-INT	PZ27.8	NO



Type	WP (MPa)	DN (mm)	Medium	Outlet thread	Inlet thread	Safety device
YSF-15	1.75	Ø4	LPG	Ø6	W28.6x1/14	2.5±0.26 MPa



## Вентили магистральные (высокого давления) GAS PIPELINE VALVE



Type	WP (MPa)	DN (mm)	Medium	Outlet thread	Inlet thread	Frame modality
QJG150-4	15	Φ4	O <sub>2</sub> , H <sub>2</sub> , N <sub>2</sub> , Air	G3/4-14-RH-EXT	G1/2-14-RH-EXT	Сальниковый
QJG150-4A	15	Φ4	O <sub>2</sub> , H <sub>2</sub> , N <sub>2</sub> , Air	G3/4-14-LH-EXT	G1/2-14-RH-EXT	Сальниковый
QJG150-4B	15	Φ4	O <sub>2</sub> , H <sub>2</sub> , N <sub>2</sub> , Air	G5/8-14-RH-EXT	G1/2-14-RH-EXT	Сальниковый



Type	WP (MPa)	DN (mm)	Medium	Outlet thread	Inlet thread	Frame modality
GJ8-1	2.5	Φ4	O <sub>2</sub> , H <sub>2</sub>	M16x1.5-RH-INT	M22x1.5-RH-EXT	Сальниковый
GJ8-1A	2.5	Φ4	O <sub>2</sub> , H <sub>2</sub>	M16x1.5-RH-INT	M18x1.5-RH-EXT	Сальниковый



Type	WP (MPa)	DN (mm)	Medium	Outlet thread	Inlet thread	Frame modality
QF-51A	15	Φ4	O <sub>2</sub> , H <sub>2</sub> , N <sub>2</sub> , Air	M18x1.5-RH-EXT	M18x1.5-RH-EXT	Сальниковый



Type	WP (MPa)	DN (mm)	Medium	Outlet thread	Inlet thread	Frame modality
QJT200-8	20	Φ8	O <sub>2</sub> , H <sub>2</sub> , N <sub>2</sub> , Air	M33x2-RH-INT	M33x2-RH-INT	Сальниковый
QJT200-10	20	Φ10	O <sub>2</sub> , H <sub>2</sub> , N <sub>2</sub> , Air	M33x2-RH-INT	M33x2-RH-INT	Сальниковый

## Вентили магистральные (высокого давления) GAS PIPELINE VALVE

Type	WP (MPa)	DN (mm)	Medium	Outlet thread	Inlet thread	Frame materiality
QJT200-15	20	Φ15	O <sub>2</sub> , H <sub>2</sub> , N <sub>2</sub> , Air	G3/4-14-RH-INT	G3/4-14-RH-INT	Сплав титановый
QJT200-20	20	Φ20	O <sub>2</sub> , H <sub>2</sub> , N <sub>2</sub> , Air	Φ32	Φ32	Сплав титановый
QJT200-25	20	Φ25	O <sub>2</sub> , H <sub>2</sub> , N <sub>2</sub> , Air	Φ38	Φ38	Сплав титановый



Type	WP (MPa)	DN (mm)	Medium	Outlet thread	Inlet thread	Frame materiality
QJT150-4	15	Φ4	O <sub>2</sub> , H <sub>2</sub> , N <sub>2</sub> , Air	G5/8-14-RH-EXT	G1/2-14-RH-1NT	Сплав титановый
QJT150-4A	15	Φ4	O <sub>2</sub> , H <sub>2</sub> , N <sub>2</sub> , Air	G1/2-14-RH-1NT	G5/8-14-RH-EXT	Сплав титановый
QJT150-4B	15	Φ4	O <sub>2</sub> , N <sub>2</sub> , Air	W22-14-RH-EXT	W22-14-RH-INT	Сплав титановый



Type	WP (MPa)	DN (mm)	Medium	Outlet thread	Inlet thread	Frame materiality
QD200-6	20	Φ6	O <sub>2</sub> , H <sub>2</sub> , N <sub>2</sub> , Air	W21.8-14-LH-EXT	G5/8-14-RH-EXT	Сплав титановый
QD200-10	20	Φ10	O <sub>2</sub> , H <sub>2</sub> , N <sub>2</sub> , Air	G3/4-14-RH-INT	G3/4-14-RH-INT	Сплав титановый



Type	WP (MPa)	DN (mm)	Medium	Outlet thread	Inlet thread	Frame materiality
QD200-15	20	Φ15	O <sub>2</sub> , H <sub>2</sub> , N <sub>2</sub> , Air	G3/4-14-RH-INT	G3/4-14-RH-INT	Сплав титановый
QD200-20	20	Φ20	O <sub>2</sub> , H <sub>2</sub> , N <sub>2</sub> , Air	Φ32	Φ32	Сплав титановый



## Муфты



00



01



02



03



04

No.	00	01	02	03	04
-----	----	----	----	----	----

Link thread	PZ39	PZ27.8	PZ27.8	PZ27.8	PZ19.2
-------------	------	--------	--------	--------	--------

## Заглушки



00



01



02



03



04



05



06

No.	DN (mm)	WP (MPa)	Link thread	Fusible alloy temperature
00	φ11	3	PZ27.8	90 ± 5 °C
01	φ5	2-3	PZ27.8	70 ± 5 °C
02	NO	2-3	PZ27.8	NO
03	φ4	2-3	PZ19.2	100 ± 5 °C
04	φ4	2-3	R3/8	70 ± 5 °C
05	φ4	2-3	Z1/4	70 ± 5 °C
07	φ4	2-3	R1/8	100 ± 5 °C

## Фитинги



00



01



02



03



04



05



06

## По вопросам продаж и поддержки обращайтесь:

Алматы (727)345-47-04  
Ангарск (3955)60-70-56  
Архангельск (8182)63-90-72  
Астрахань (8512)99-46-04  
Барнаул (3852)73-04-60  
Белгород (4722)40-23-64  
Благовещенск (4162)22-76-07  
Брянск (4832)59-03-52  
Владивосток (423)249-28-31  
Владикавказ (8672)28-90-48  
Владимир (4922)49-43-18  
Волгоград (844)278-03-48  
Волгодонск (8172)26-41-59  
Воронеж (473)204-51-73  
Екатеринбург (343)384-55-89

Россия +7(495)268-04-70

Иваново (4932)77-34-06  
Ижевск (3412)26-03-58  
Иркутск (395)279-98-46  
Казань (843)206-01-48  
Калининград (4012)72-03-81  
Калуга (4842)92-23-67  
Кемерово (3842)65-04-62  
Киров (8332)68-02-04  
Коломна (4966)23-41-49  
Кострома (4942)77-07-48  
Краснодар (861)203-40-90  
Красноярск (391)204-63-61  
Курск (4712)77-13-04  
Курган (3522)50-96-47  
Липецк (4742)52-20-61

Казахстан +7(727)345-47-04

Магнитогорск (3519)55-03-13  
Москва (495)268-04-70  
Мурманск (8152)59-64-93  
Набережные Челны (8552)20-53-41  
Нижний Новгород (831)429-08-12  
Новокузнецк (3843)20-46-81  
Ноябрьск (3496)41-32-12  
Новосибирск (383)227-86-73  
Омск (3812)21-46-40  
Орел (4862)44-53-42  
Оренбург (3532)37-68-04  
Пенза (8412)22-31-16  
Петрозаводск (8142)55-98-37  
Псков (8112)59-10-37  
Пермь (342)205-81-47

Беларусь +(375)257-127-884

Ростов-на-Дону (863)308-18-15  
Рязань (4912)46-61-64  
Самара (846)206-03-16  
Санкт-Петербург (812)309-46-40  
Саратов (845)249-38-78  
Севастополь (8692)22-31-93  
Саранск (8342)22-96-24  
Симферополь (3652)67-13-56  
Смоленск (4812)29-41-54  
Сочи (862)225-72-31  
Ставрополь (8652)20-65-13  
Сургут (3462)77-98-35  
Сыктывкар (821)225-95-17  
Тамбов (4752)50-40-97  
Тверь (4822)63-31-35

Узбекистан +998(71)205-18-59

Тольятти (8482)63-91-07  
Томск (3822)98-41-53  
Тула (4872)33-79-87  
Тюмень (3452)66-21-18  
Ульяновск (8422)24-23-59  
Улан-Удэ (3012)59-97-51  
Уфа (347)229-48-12  
Хабаровск (4212)92-98-04  
Чебоксары (8352)28-53-07  
Челябинск (351)202-03-61  
Череповец (8202)49-02-64  
Чита (3022)38-34-83  
Якутск (4112)23-90-97  
Ярославль (4852)69-52-93

Киргизия +996(312)96-28-47

эл.почта: [vsj@nt-rt.ru](mailto:vsj@nt-rt.ru) || сайт: <https://savalve.nt-rt.ru/>